

KPM220 --User Manual

Jul 2022 Ver : 2. 2

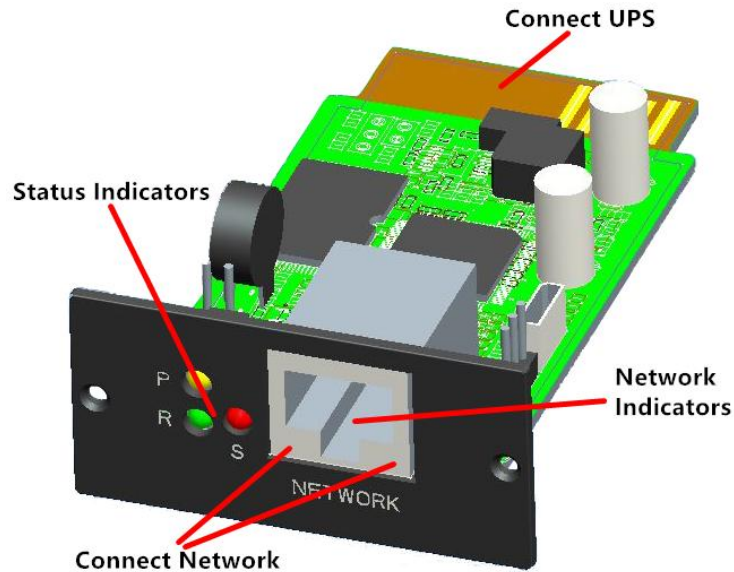
Content

Revision Record	3
1. Product Introduction	4
1.1. Overview	4
1.2. Functions	4
1.3. Features	4
1.4. Network Interface	5
1.5. Definition of Indicator Lights	5
2. KPM220 Installation	5
2.1. KPM220 Installation & Connection	5
KPM220 Installation & Connection	5
2.2. SNMP-Tool Installation & Usage	6
3. Web Login	11
3.1. Logging in Management Page	11
3.2. Changing IP Address	12
4. Web Monitoring Management	12
4.1. Real-time Information	12
4.2. Parameter Settings	15
4.2.1. Parameter Settings	15
4.2.2. UPS Time Switch	16
4.2.3. Network Settings	18
4.2.4. SNMP Settings	18
4.2.5. E-Mail Settings	20
4.2.6. System Users	21
4.2.7. System Time	22
4.2.8. Language	22
4.3. History	23
4.3.1. Data Log	23
4.3.2. Event Log	23
4.3.3. Set Log	24
4.3.4. Export Log	24
4.4. About	25
4.4.1. Web Page Upgrade	25
4.4.2. Export/Import Settings	25
4.4.3. Reset	26
5. Shutdown Protection Software--SNMP_Protector	26
5.1. SNMP_Protector Installation	26
5.2. SNMP_Protector Usage	27
6. Centralized Monitoring Software--SNMP Management	30
6.1. SNMP Management	30
6.2. SNMP Management Usage	31

1. Product Introduction

1.1. Overview

KPM220 is a built-in network SNMP card independently . It supports SNMPv1/v2 and v3 protocols, features e-mail alarm, historical events and historical data storage. Picture is shown as below:



1.2. Functions

- Support multiple operating systems (Windows、 Mac、 Linux)
- UPS can be monitored remotely through the network;
- Can realize web-based user interface;
- Support e-mail alarm;
- Multi-user permission management;
- Support DHCP;
- Support remote self-testing, shutdown and restart UPS functions (UPS support required);
- Support scheduled tasks (timed self-test, power on/off);
- Historical events and historical data storage functions;
- Remote UPS monitoring and management can be performed through HTTP, SNMP, Modbus TCP/IP;
- Complete equipment event handling (including event recording and notification);

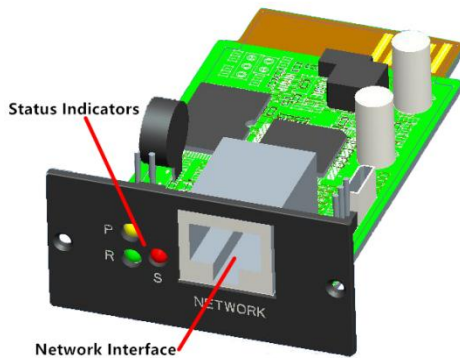
1.3. Features

- Networking methods: IP-based LAN, WAN, Internet, wireless Ethernet, etc.;
- User permission management, safe, confidential and reliable;

- Support Web page configuration;
- Support scheduled task function, allow setting scheduled UPS on/off, scheduled battery discharge, etc.
- Support storage of 50, 000 historical data and 5, 0000 historical event records;
- Built-in ultra-long-life system clock, support automatic timing to achieve time synchronization;
- Support SNMP V1/V2/V3, HTTP, Modbus TCP/IP and other network protocols;
- Support IPV6;

1.4. Network Interface

10/100M RJ45 Ethernet interface, used to connect to the switch.



1.5. Definition of Indicator Lights

Power indicator yellow (Power), always on;

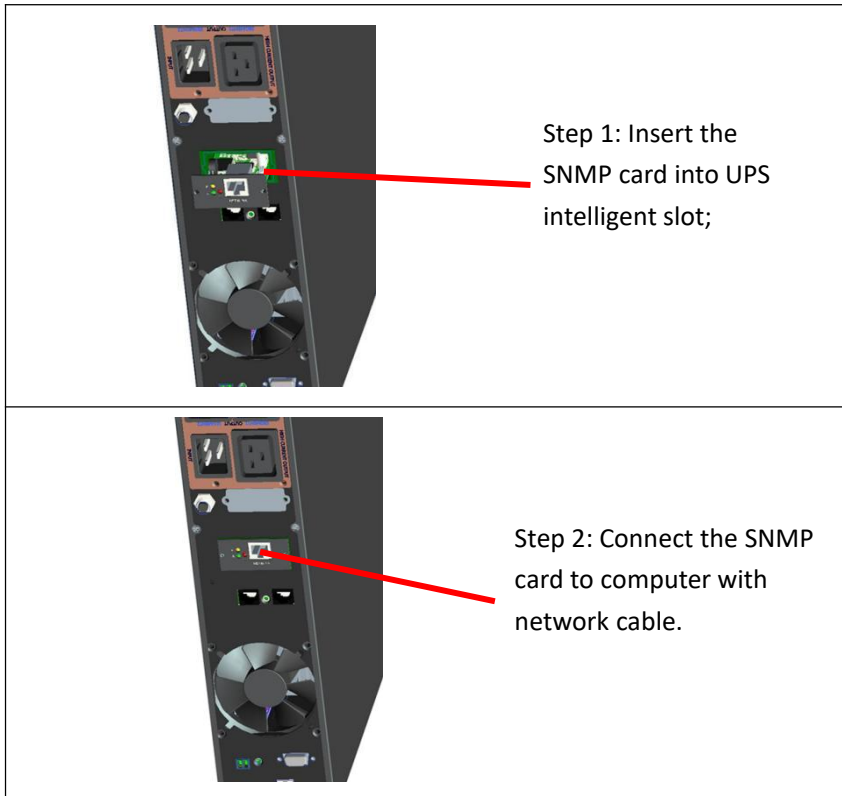
Status indicator red (Status), off when normal, always on when failure;

Run indicator green (Run), flashing when the program is running normally.

2. KPM220 Installation

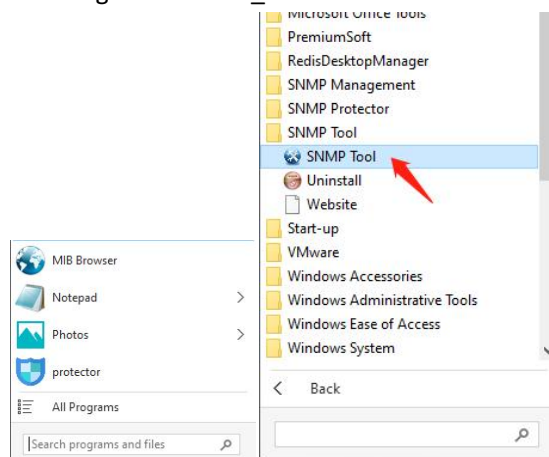
2.1. KPM220 Installation & Connection

KPM220 Installation & Connection



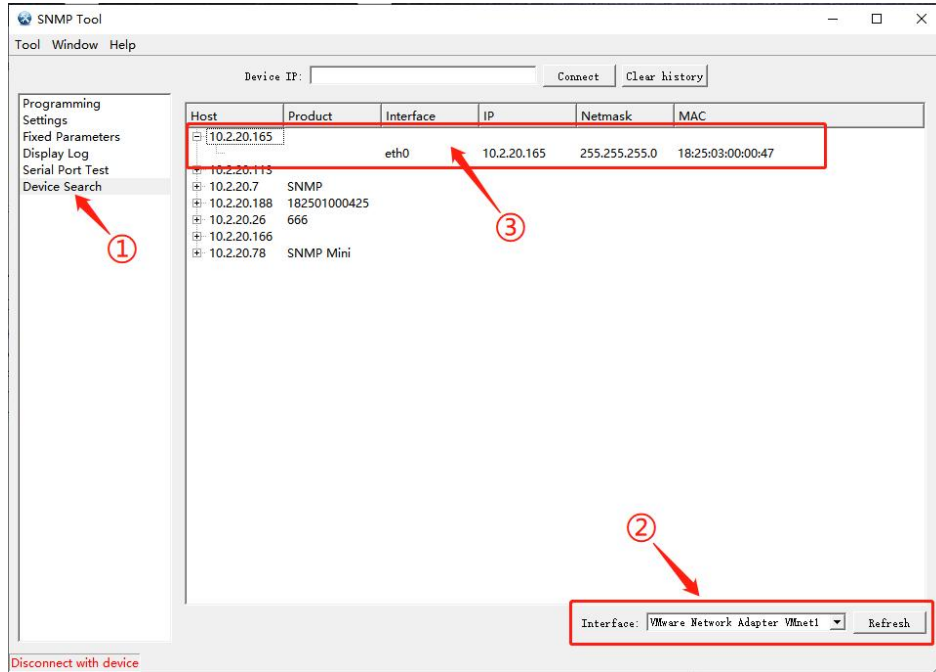
2.2. SNMP-Tool Installation & Usage

A. Download installation files from <http://download.ksdatacloud.com>, execute “SNMP_Tool_20xxxxxx_V1.x.x.exe” to start the install the software, users can find the icon of software in “Start menu--All Programs--SNMP_Tool” after installation.



B. Device IP address searching

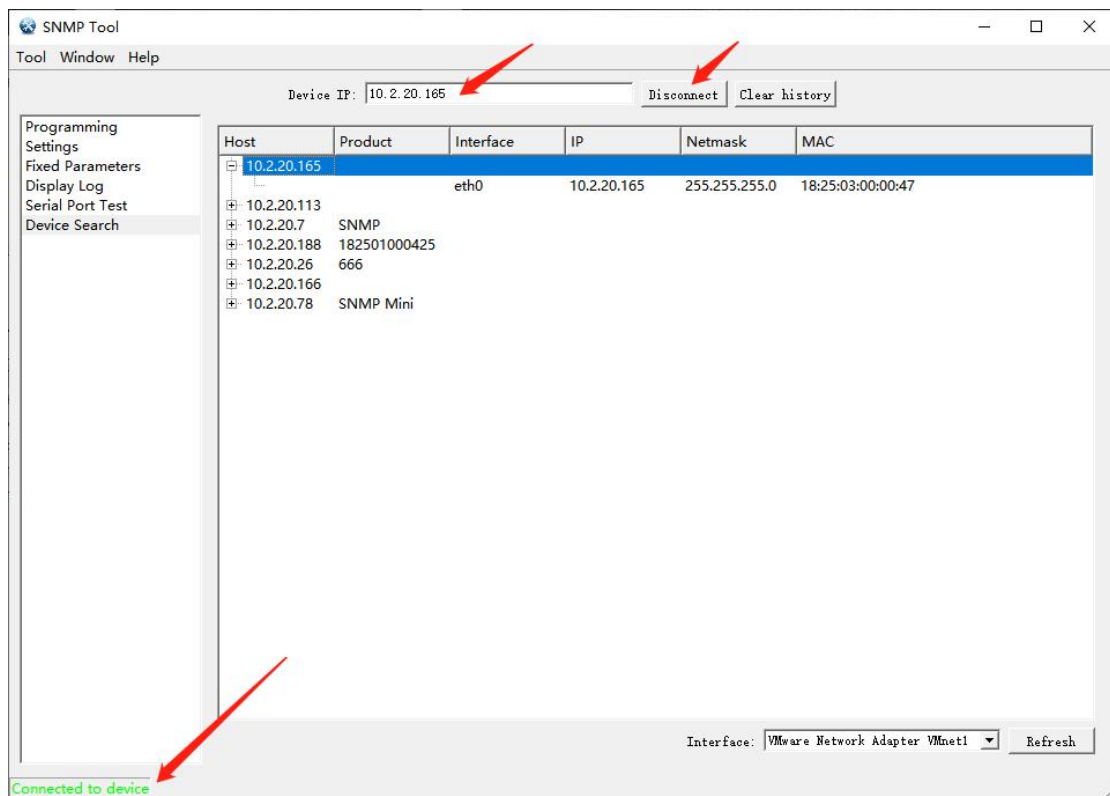
If the CURRENT IP address of the SNMP card cannot be determined because the IP address is changed or the IP mode of the shipped device is DHCP, you can search the IP address of SNMP card by installed “SNMP-Tool”, the specific methods are as follows: ①Click“Device Search”, ② Choose current network port, click”Refresh”to query the SNMP card IP in the LAN.



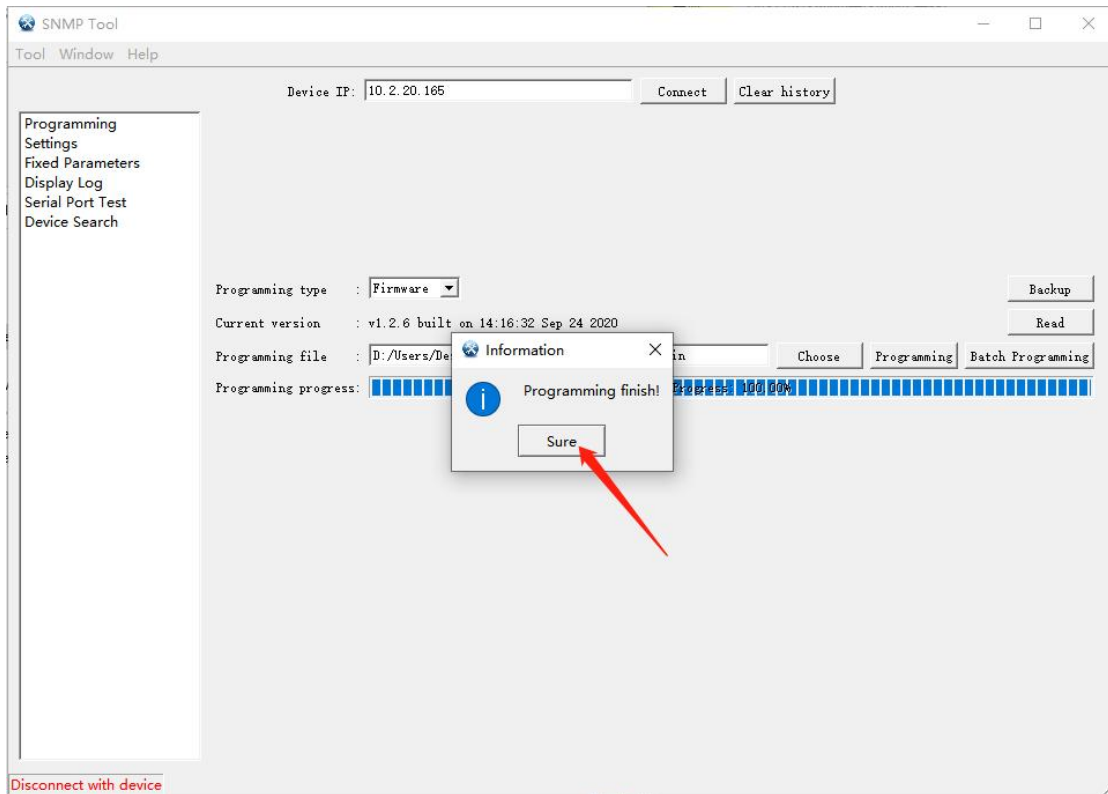
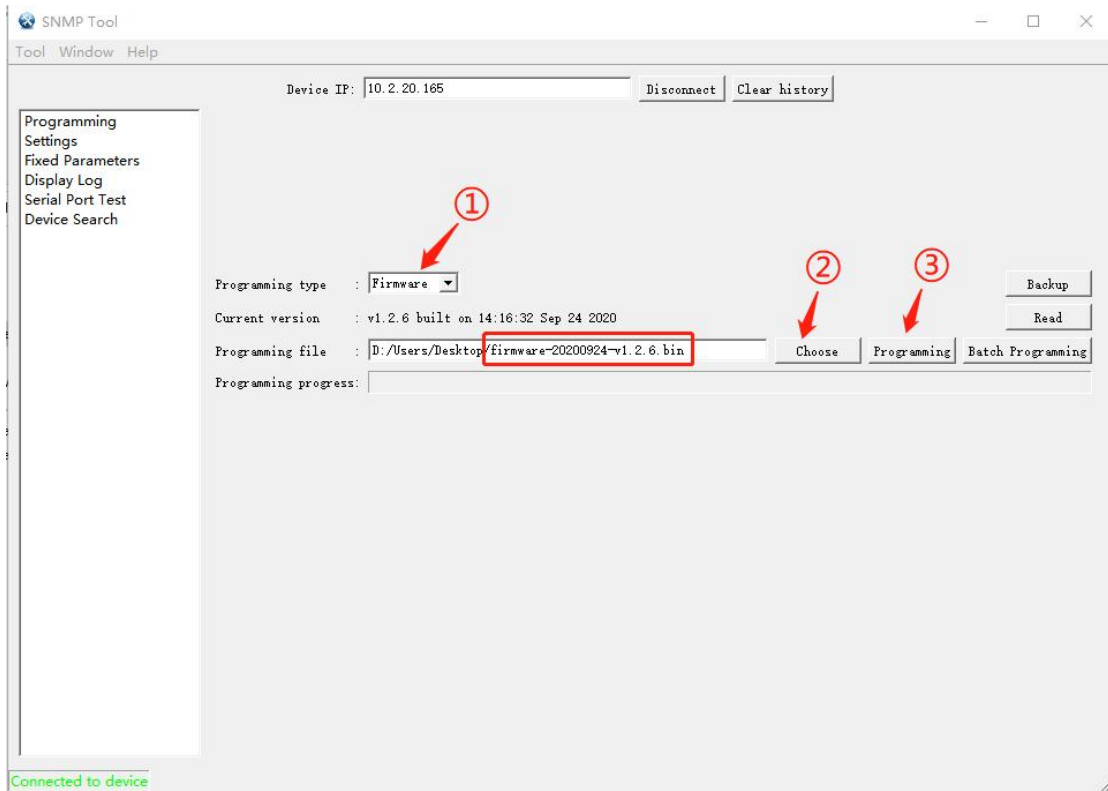
C. Software version upgrade

(1) Connect the device, input the IP of the device that needs upgrade, click “Connect”

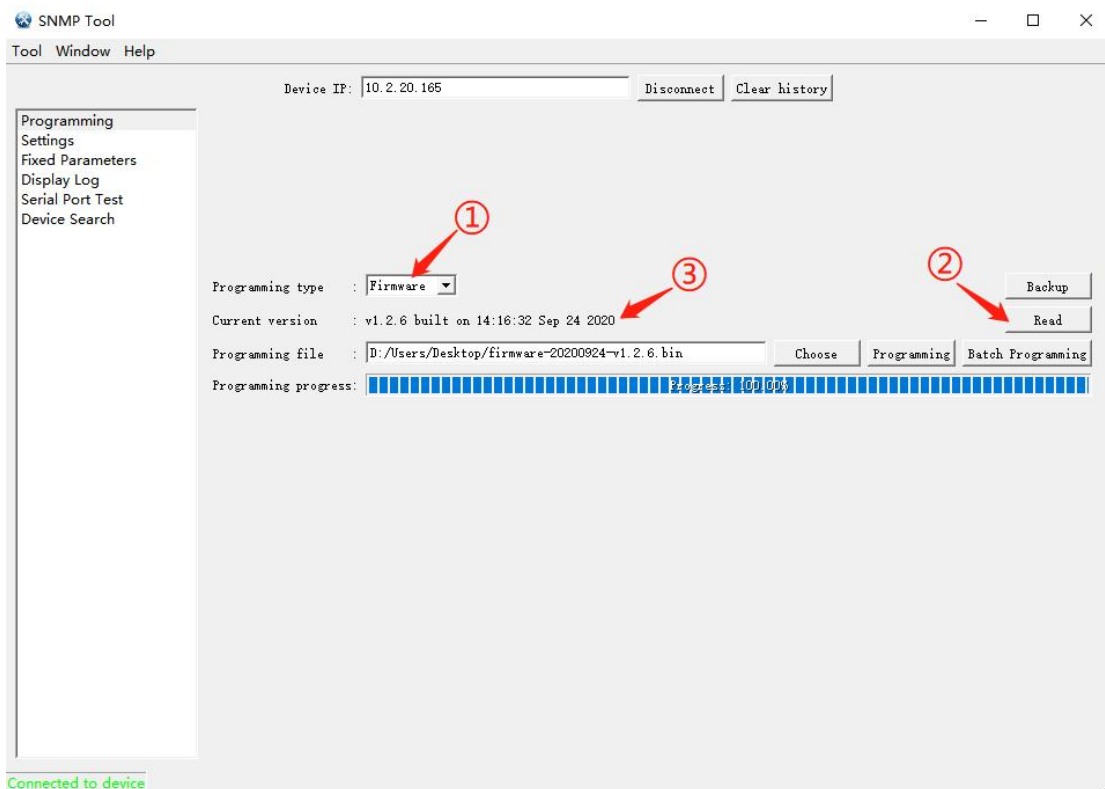
After the connection is successful, there will be a green font in the lower left corner of the tool interface that displays “Connected to device”.



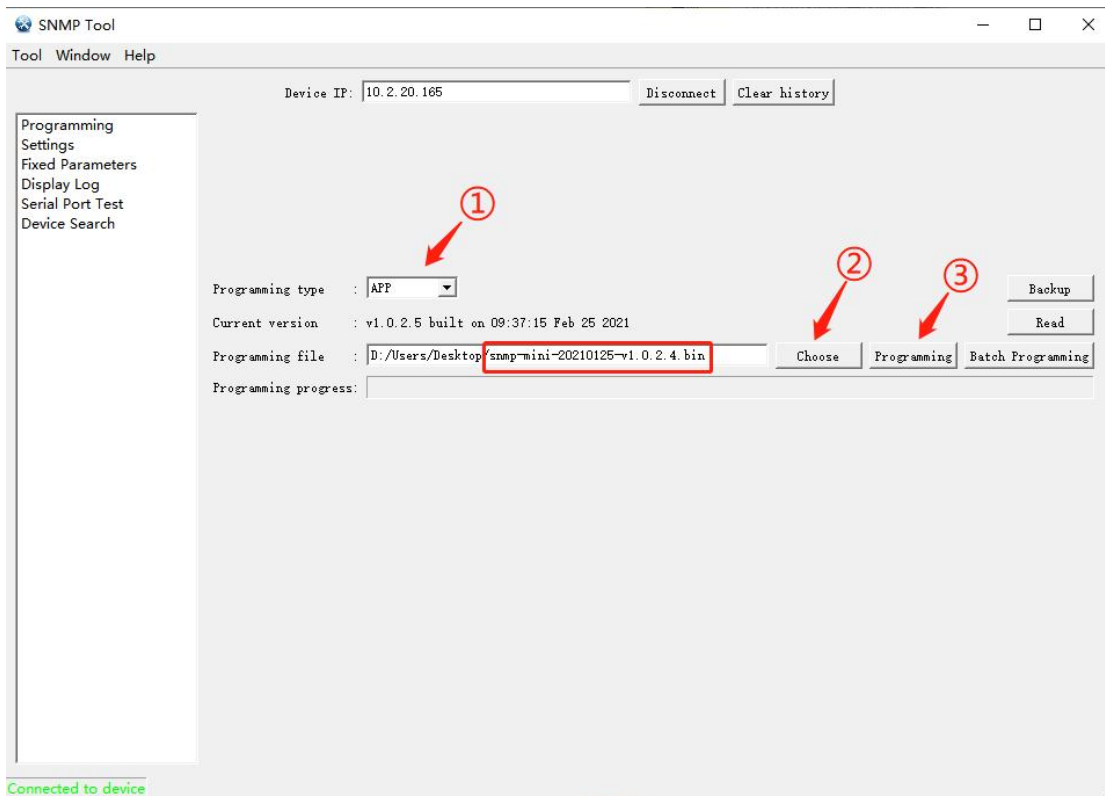
(2) Upgrade the firmware , select the new version file(file type is firmware -20xxxx-v1.x.x.bin), and click “Programming”, it will prompt “Programming finish”.

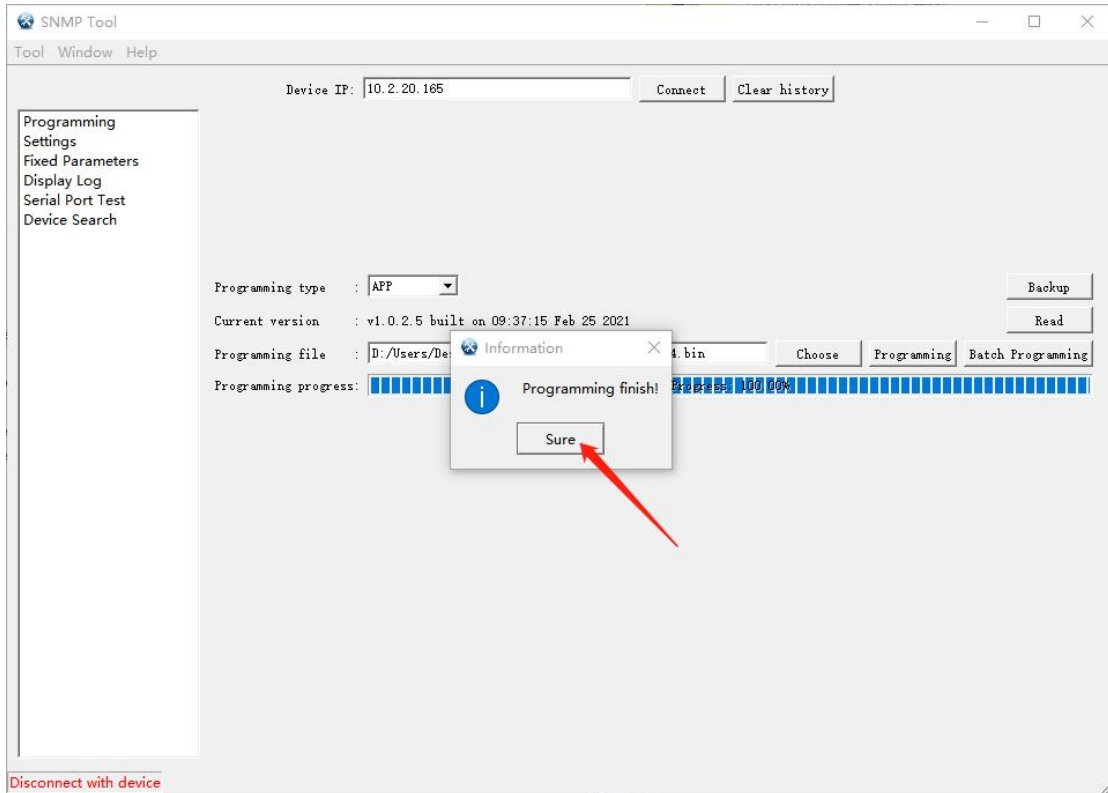


Check whether the firmware upgrade is successful, as shown in the figure below: Programming --Programming type--select "Firmware"-- Read -- check the current program version.

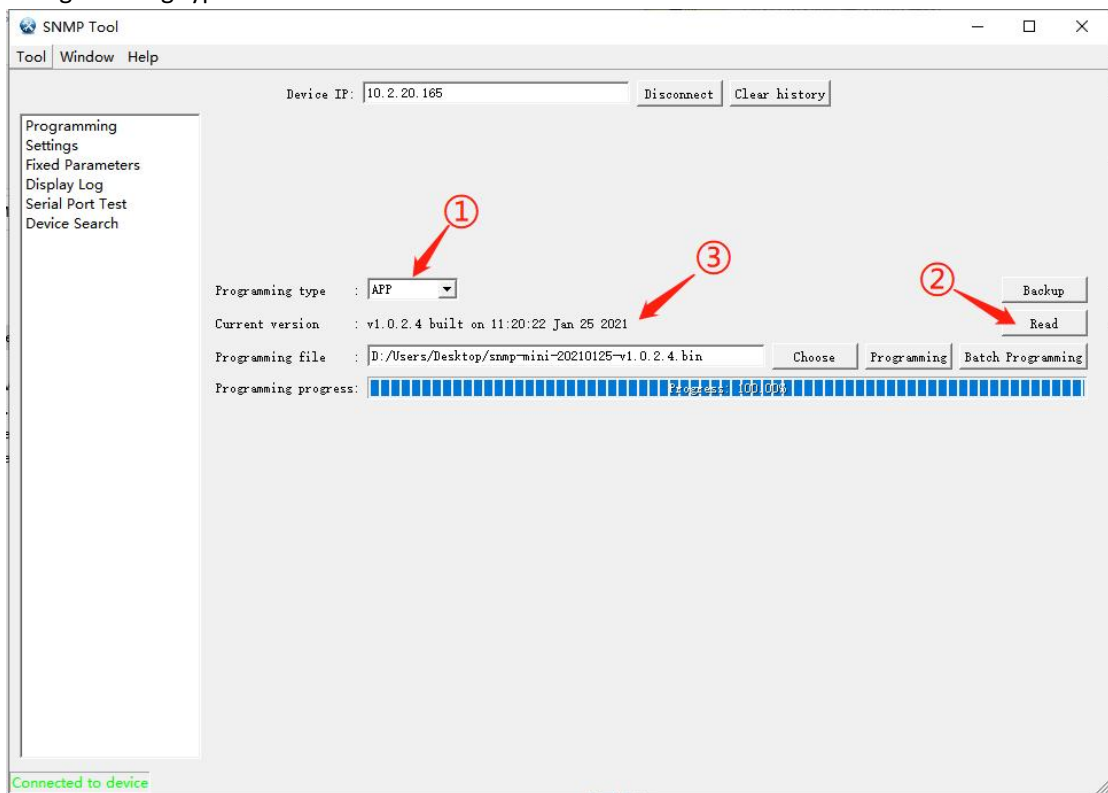


(3) Upgrade the application, (1) Programming type select "APP" (2) select the new version file (file type is snmp-20xxxxx-v1.x.x.x.bin), (3) click "Programming", wait about 30 seconds, it will prompt "Programming finish". And then log in the background of SNMP card to check the software version.





Check whether the application upgrade is successful, as shown in the figure below: Programming - Programming type select "APP" - Read - check the current software version.



3. Web Login

3.1. Logging in Management Page

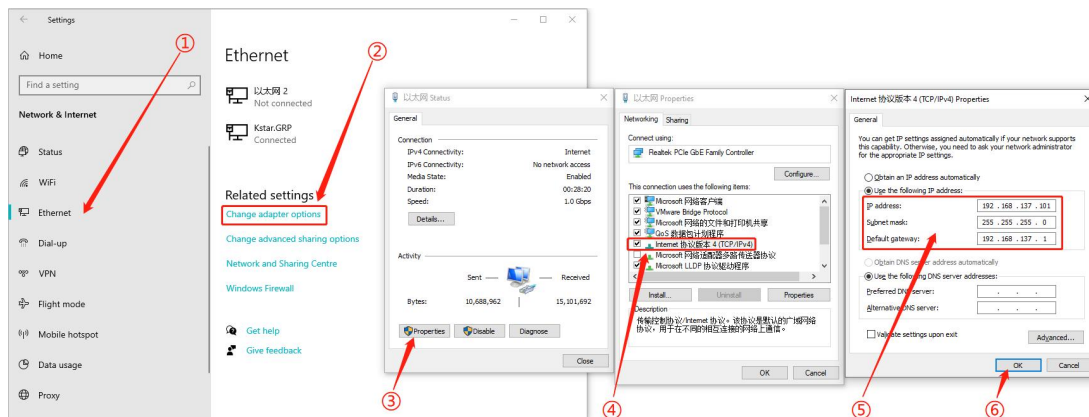
Connect the PC and SNMP card to the router, and use SNMP_Tool to search for the IP address of the device (see [2.2 B.Device IP address searching](#)). Device IP address search, and then enter the IP address in the browser to log in(The default user name and password are admin) to the SNMP monitoring system.

Note: Before login, modify the PC IP address and ensure that the PC IP address and SNMP card IP address are in the same network segment.



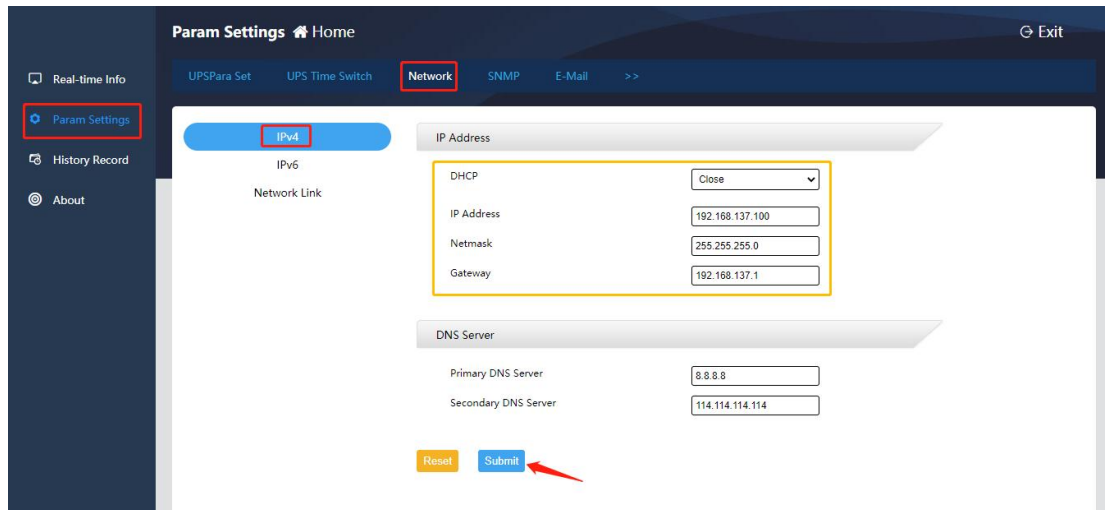
The method to modify the computer IP is as follows:

Open “Network & Internet”, ①Select “Ethernet”, ②Click “Change adapter options”, double click the Ethernet connected, ③Click “Properties”, ④Double click “Internet protocol version 4(TCP/IPv4)”, ⑤Select “Use the following IP address:”, fill in the IP address information of the same network segment as the SNMP card(for example:The device IP address is 192.168.137.100,Then set the COMPUTER IP address to 192.168.137.101, subnet mask is 255.255.255.0, default gateway is 192.168.137.1,If you are not sure about the gateway, you do not need to set the gateway.) ⑥Click “OK”.



3.2. Changing IP Address

Parameter settings - Network -- IPV4, set to automatically obtain IP (select On for DHCP) or static IP address (select Off for DHCP), set the static IP address of SNMP card, and fill in the corresponding subnet mask and gateway; when domain name resolution is used, you need to set the DNS server; click "Submit" to confirm after completing the settings, as shown in the figure below:

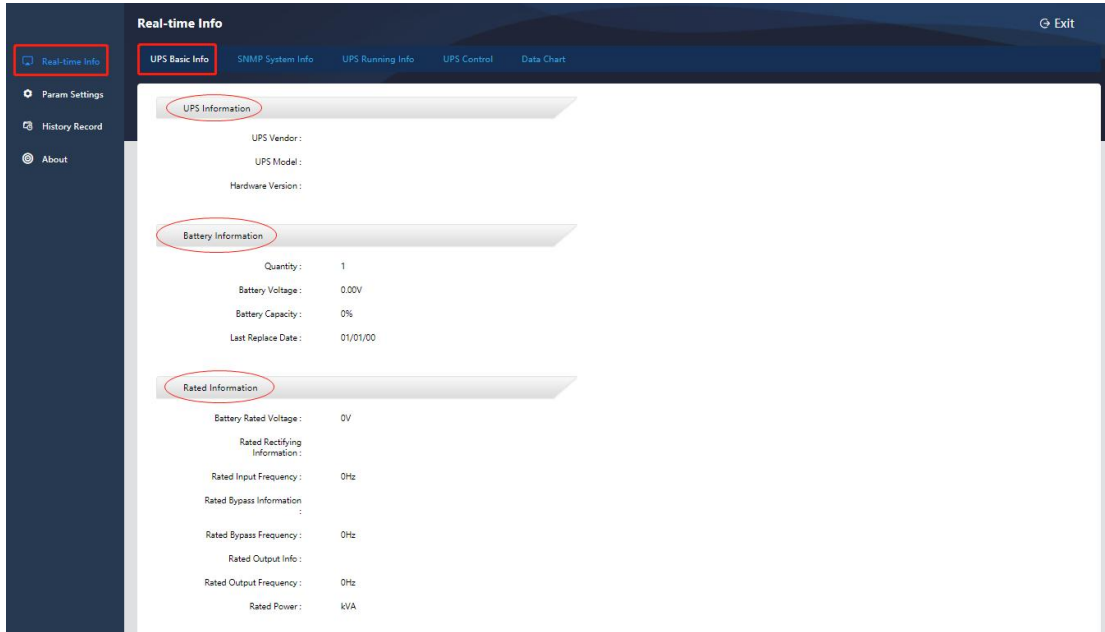


4. Web Monitoring Management

4.1. Real-time Information

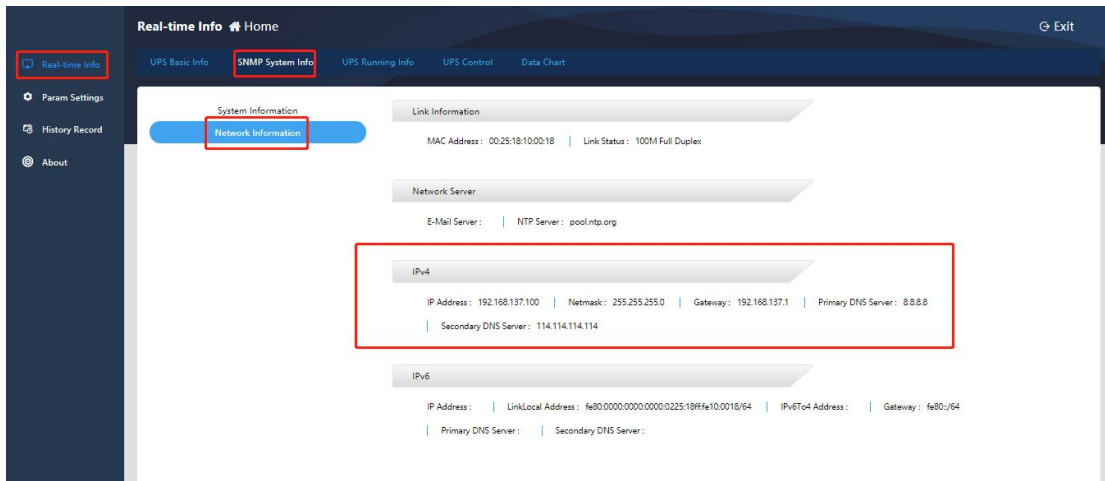
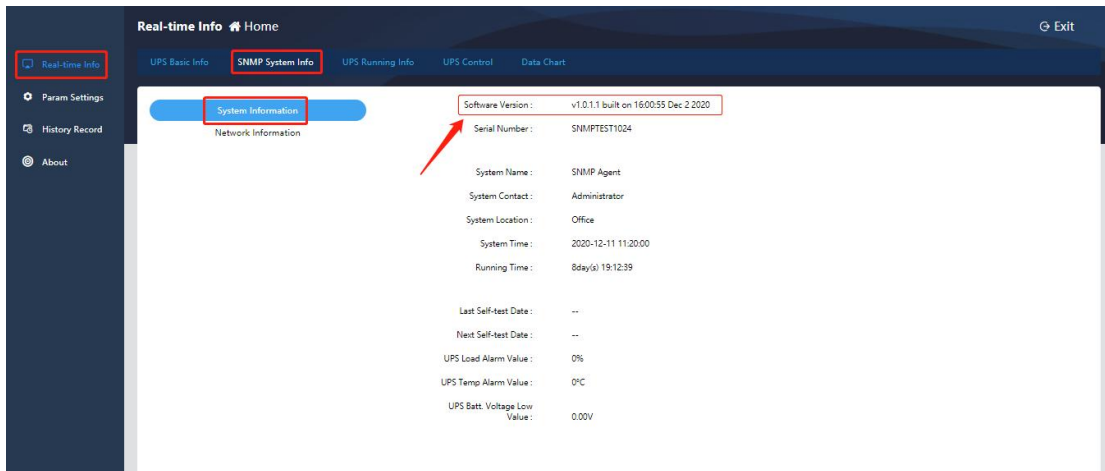
A. UPS Basic Information

This item allows viewing basic UPS information, including UPS information, battery information and rated information, as shown in the following figure:



B. SNMP System Information

This item allows viewing system information (software version), network information (IP information), as shown in the figure below:



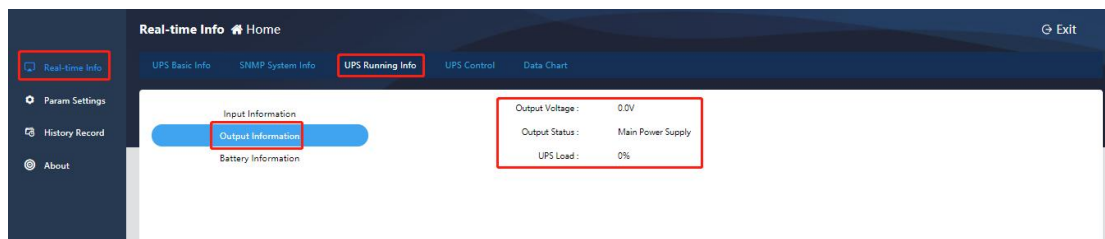
C. UPS Operation Information

The content of UPS operation information is different according to the selected communication protocol. Taking MegaTec1:1 protocol as an example, UPS operation information includes input information, output information, and battery information, as shown in the following figure:

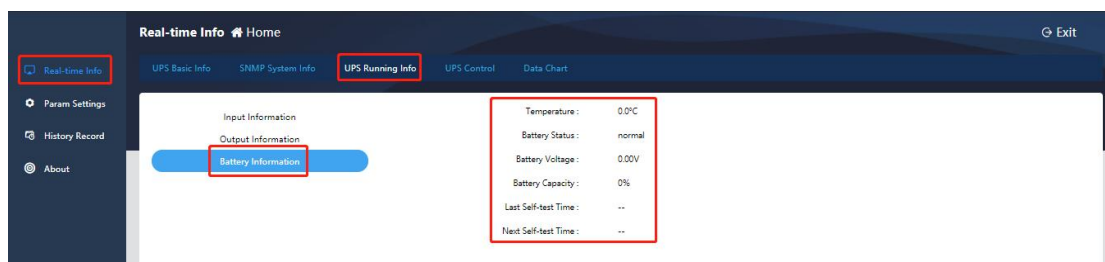
Input information:



Output information:

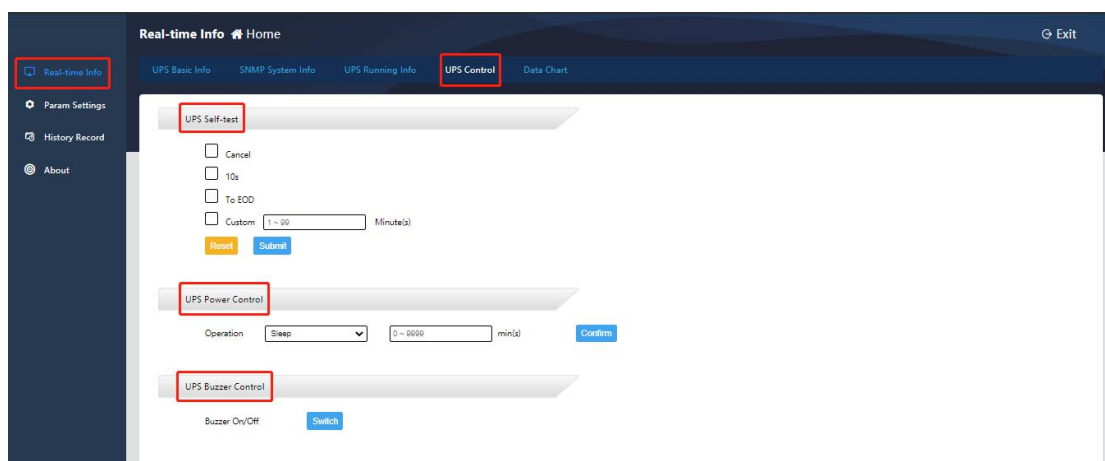


Battery information:



D. UPS Control

The UPS control content is different according to the selected communication protocol. Take the MegaTec1:1 protocol as an example, it includes manual UPS self-check, manual power on/off and buzzer on/off control, as shown in the figure below;



E. Data Chart

This item can be used to query the single day operating data change curve of the equipment by selecting a specific date. The data types include temperature (°C), output voltage, and load (%). You can select or cancel the type to be displayed by clicking the mouse. The curve recording interval is 90 minutes.



4.2. Parameter Settings

4.2.1. Parameter Settings

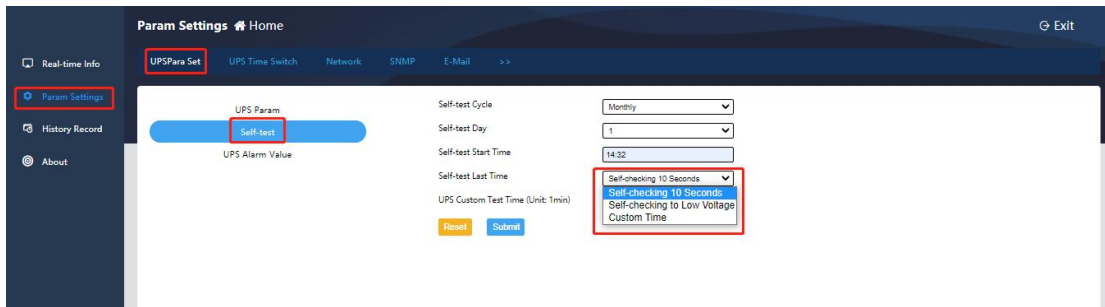
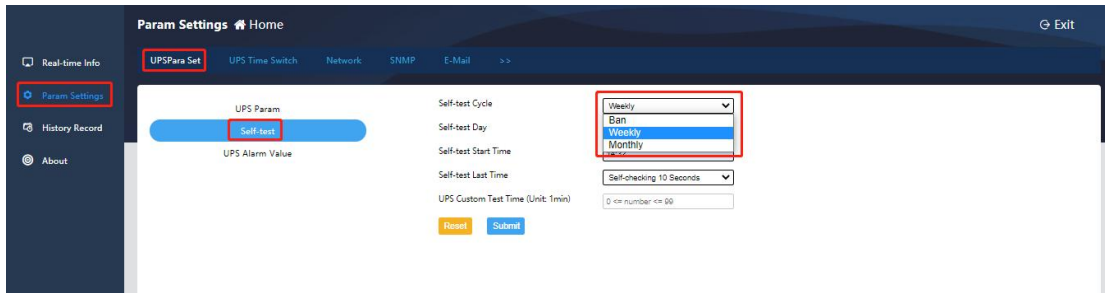
A. UPS Parameter Settings

Here you need to ①Select the UPS protocol according to the actual situation on site, ②Fill in the battery information、 device ID ③Data store cycle, ④Customize communication parameters (no need to be set by default), after parameter setting, ⑤Click "Submit" and it's effective, as shown in the figure below:

The screenshot shows the 'UPS Para Set' interface. It has a left sidebar with 'Param Settings' selected. The main area is divided into 'Basic Parameters' and 'Custom Communication Parameters'.
Basic Parameters:
- UPS Protocol: MegaTec-1.1 (indicated by ①)
- Device ID: 1
- Quantity of Batteries: 1
- Number of Single Battery Pack: 6 (indicated by ②)
- Battery Full Charge Voltage (Unit: 0.01V): 2.25
- Battery Empty Charge Voltage (Unit: 0.01V): 1.97
- Battery Vol Calibration Value (Unit: 0.01V): 0.00
- Battery Last Replace Date: 2000-01-01 (indicated by ③)
- UPS Data Store Cycle (Unit: 1min): 1
Custom Communication Parameters:
- Custom Communication Enable: Ban
- Baud: 9600
- Flow Control: rts (indicated by ④)
- Parity Check: rts
- Data Bits: 8
- Stop Bits: 1
At the bottom, there are 'Reset' and 'Submit' buttons (indicated by ⑤).

B. Self-check Settings

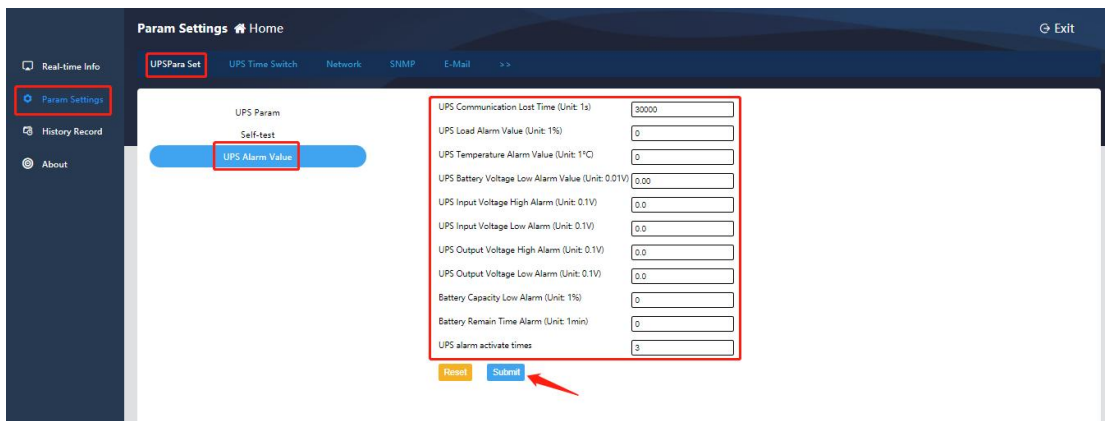
This function depends on whether the UPS host has a self-check function. The UPS self-check cycle can be weekly/monthly, and the self-check time can be customized, 10 seconds or until the battery voltage is low. Click [Submit] after completing the setting, as shown in the figure below:



C. UPS Alarm Value Setting

This item allows customizing the UPS communication loss time (for example, if 30 seconds is set, the UPS is offline when the communication is lost for 30 seconds), load alarm value, temperature alarm value, battery voltage low alarm value, UPS input/output voltage alarm Value, UPS alarm activation times (for example, if the setting value is 3, it will output alarm information when the program returns 3 consecutive polls); after completing the settings, click [Submit] to confirm.

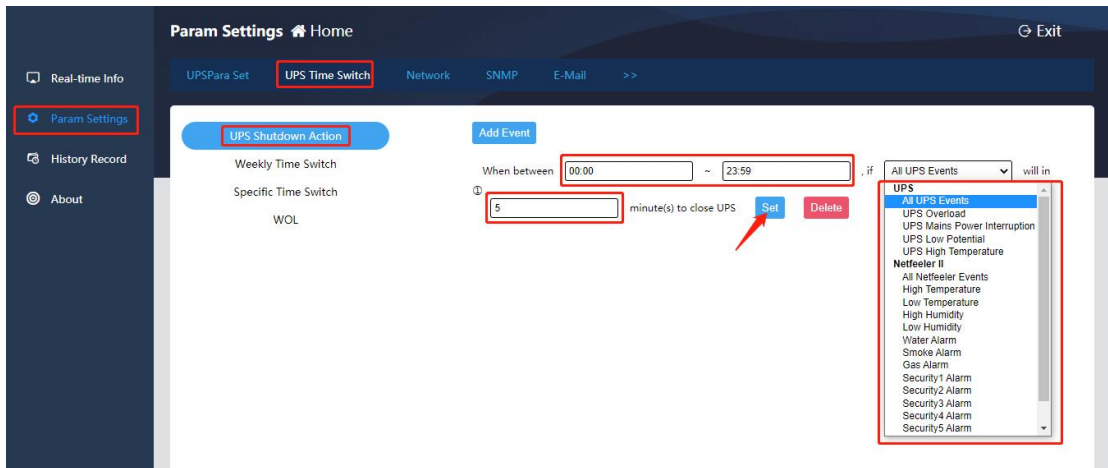
Note: Except UPS communication loss time and UPS alarm activation times, when other custom alarm values are set to 0, means this type of alarm is not enabled.



4.2.2. UPS Time Switch

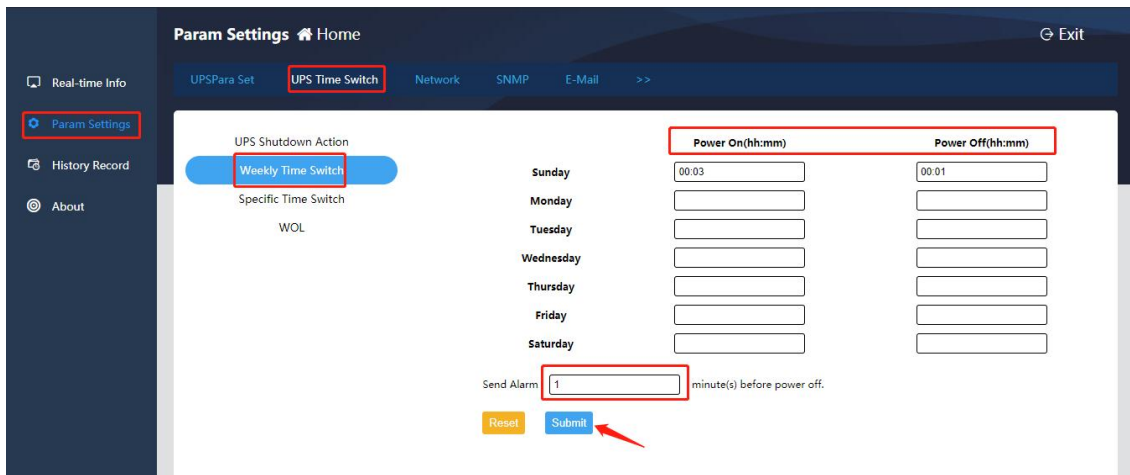
A. UPS Shutdown Action

This function allows selecting the time period of shutdown, shutdown conditions, and execution time of shutdown. After setting, click [Set] to confirm:



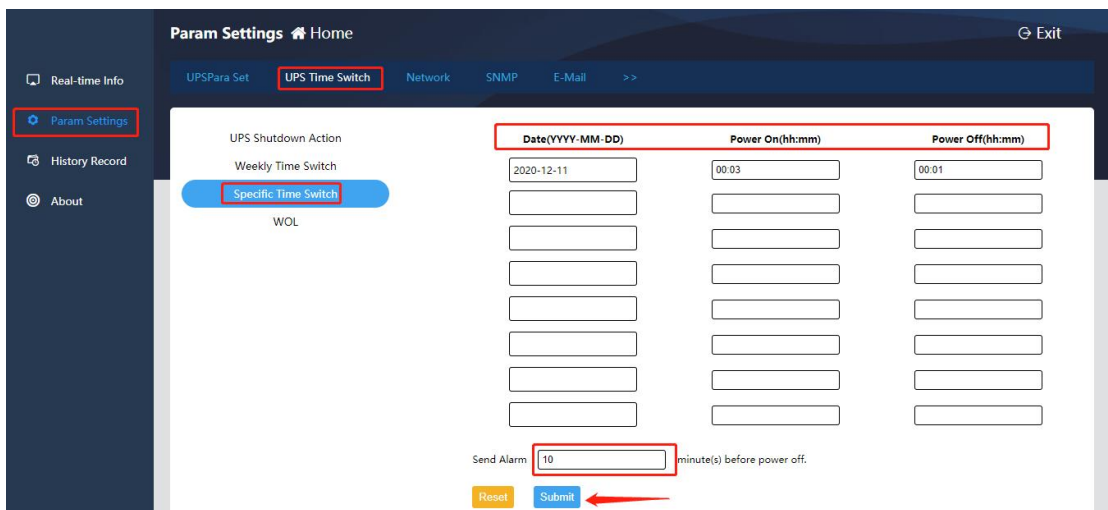
B. Weekly Time Switch

This setting takes one week as a cycle. You can set the specific time of one day or several days in the cycle to perform the power on/off action, and you can set the minutes of sending an alarm before shutdown. After completing the setting, click [Submit] to confirm, as shown below:



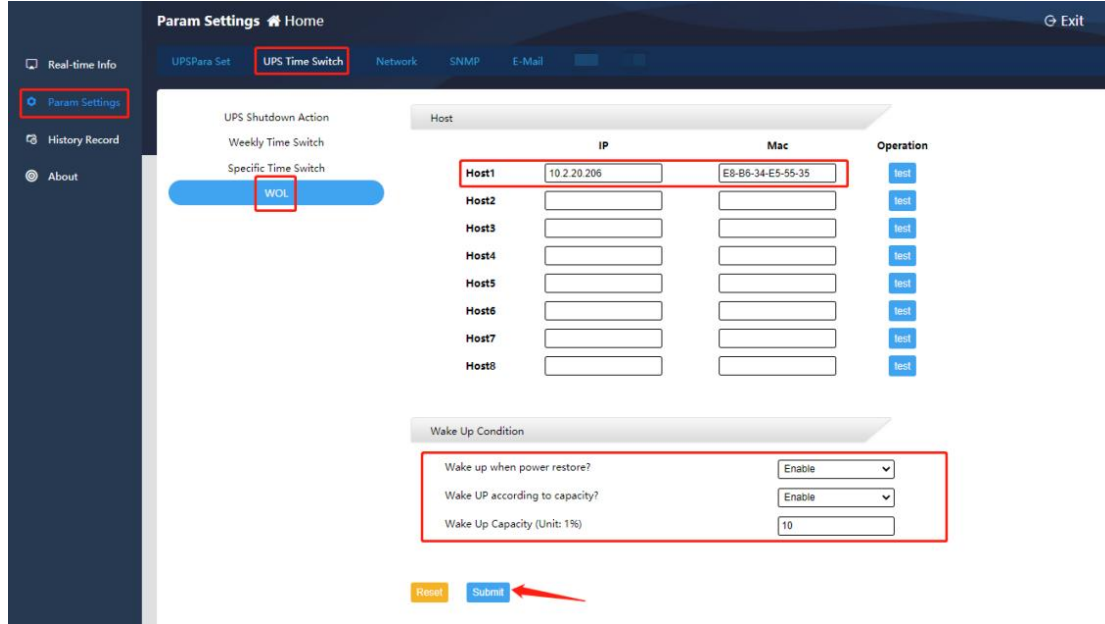
C. Specific Time Switch

This item allows setting the specific date and time to perform the power on/off action, and can set the minutes of sending an alarm before shutdown. After completing the setting, click [Submit] to confirm, as shown below:



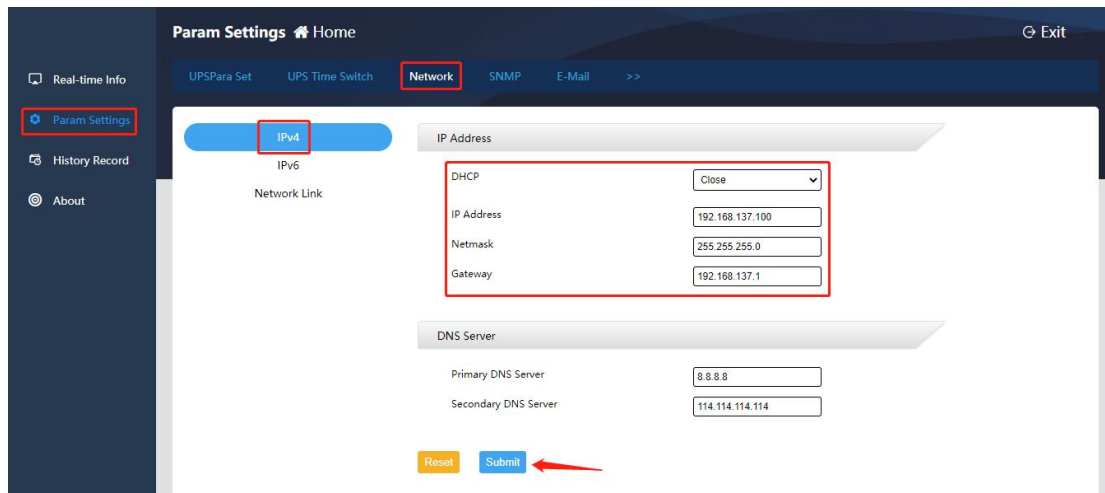
D. WOL

This item allows setting wake-up of specific host (the computer mainboard should support wake-up setting function), set to wake up when the power is restored or wake up when the power reaches the set percentage. After completing the settings, click [Submit] to confirm, as shown below:



4.2.3. Network Settings

This item allows setting the static IP address of the SNMP card, filling in the corresponding subnet mask and gateway, and setting the DNS server when using the domain name resolution function; click [Submit] to confirm after completing the settings, as shown below:

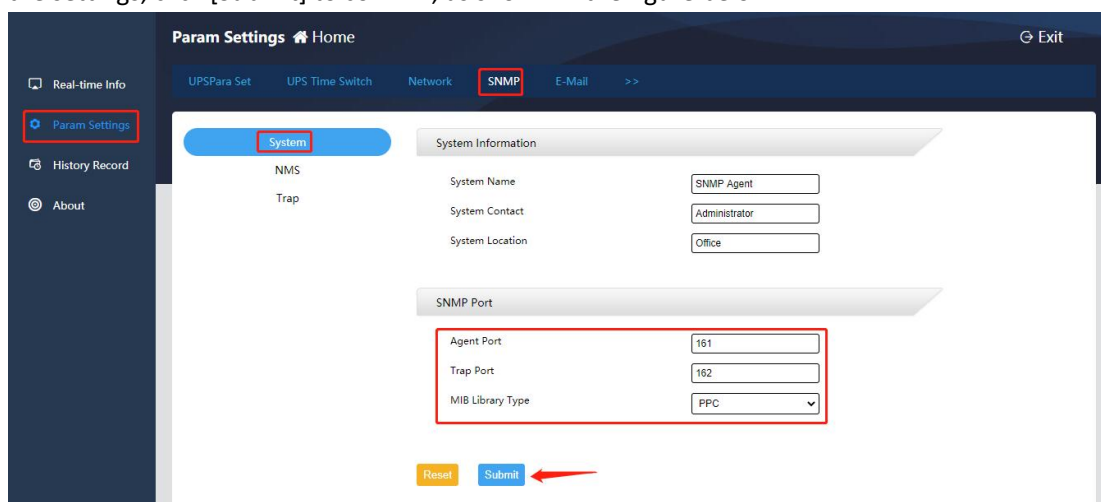


4.2.4. SNMP Settings

A. System Settings

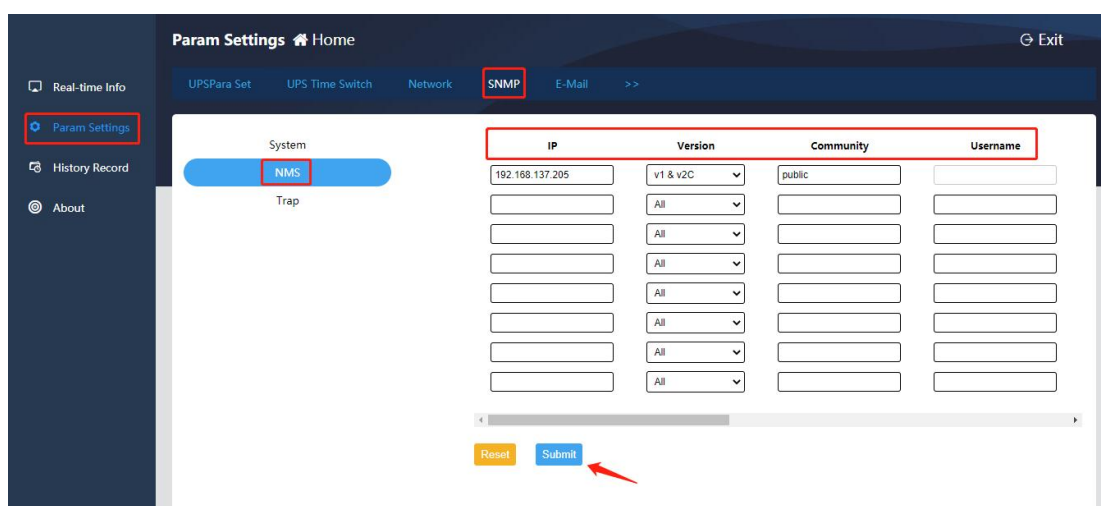
This item allows changing the system information (system name, system administrator, system location), and setting the SNMP port. The default Agent port is 161 (the data transmission port for uploading real-time data when the platform issues polling instructions), and the Trap

port is 162 (data transmission port for real-time upload of alarm information). After completing the settings, click [Submit] to confirm, as shown in the figure below:



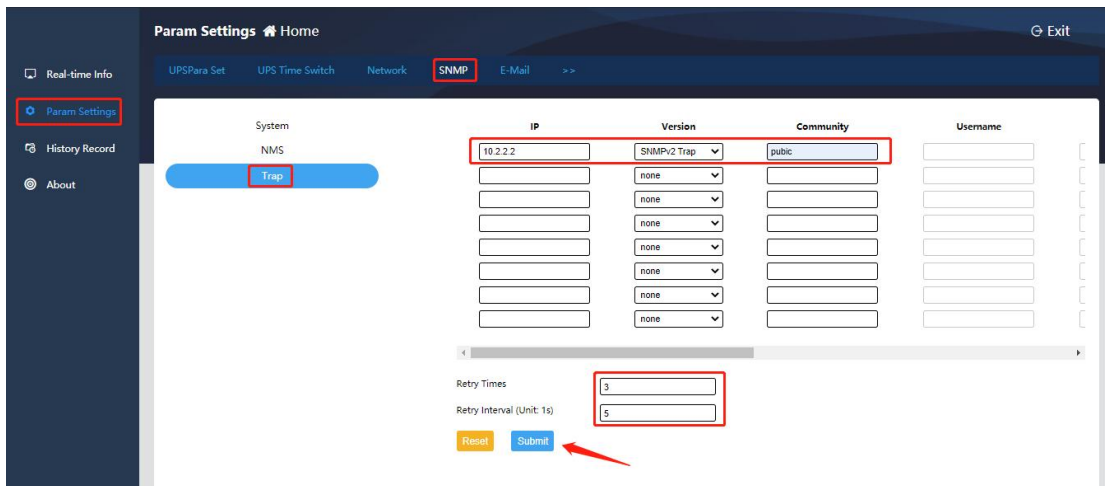
B. NMS Settings

If no IP address is set, the card has no access restrictions. Any IP can obtain the SNMP card operating data by visiting the SNMP card; if the IP, community string and version are set, only the IP added in the settings can visit the device;



C. Trap Settings

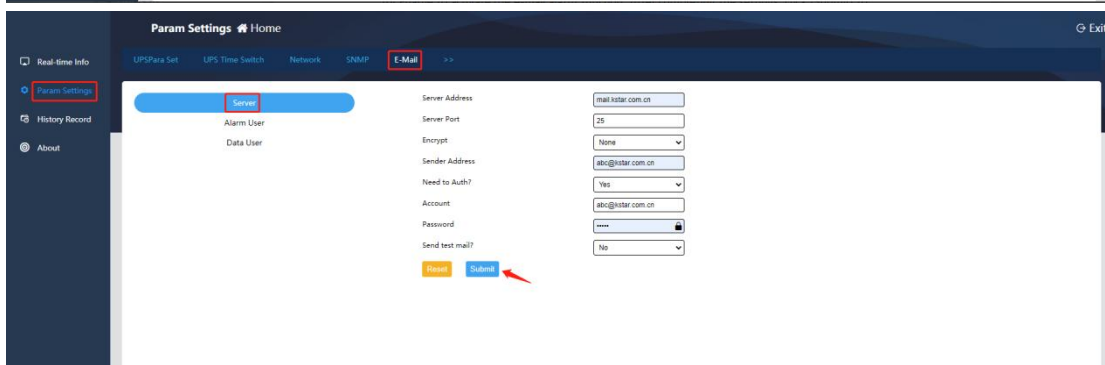
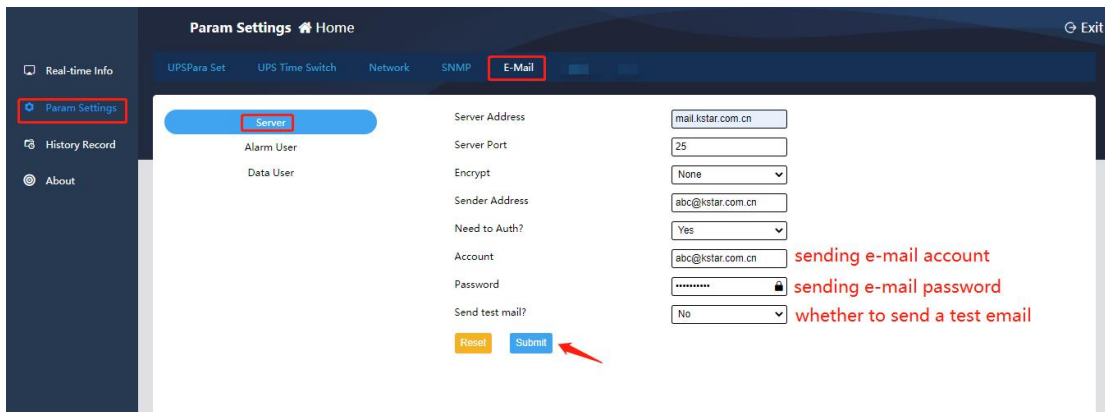
This item allows setting the monitoring server IP and version (SNMPv1 Trap, SNMPv2 Trap, SNMPv2 Inform, SNMPv3 Trap, SNMPv3 Inform), and filling in the community string (can be understood as the transmission password of the SNMP protocol, the SNMP card and the connected monitoring platform should have consistent setting). After the above settings are completed, the alarm information of the SNMP card can be uploaded to the designated monitoring platform in real time, and the number of retries and retry interval can be set. After completing the settings, click [Submit] to confirm, as shown below:



4.2.5. E-Mail Settings

A. Server Settings

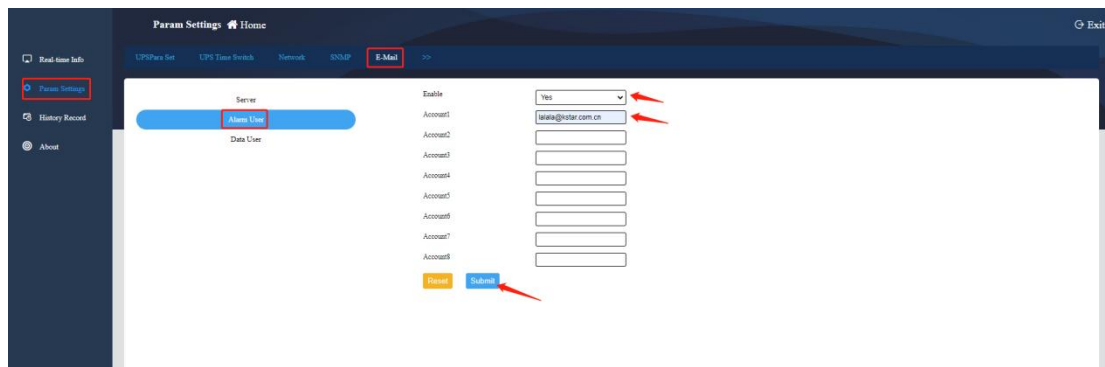
This item needs to set the e-mail server address(Only SMTP mail servers are supported,POP3 and IMAP are not supported), server port number(For example, the default port number of the non-encrypted mailbox is 25, and the default port number of the SSL/TLS encrypted mailbox is 465 or 587), sender address (same as the sending e-mail account), sending e-mail account and sending e-mail password. In addition, you can check whether the e-mail is encrypted and whether to send a test email. After completing the settings, click [Submit] to confirm, as shown below:



B. Alarm User Settings

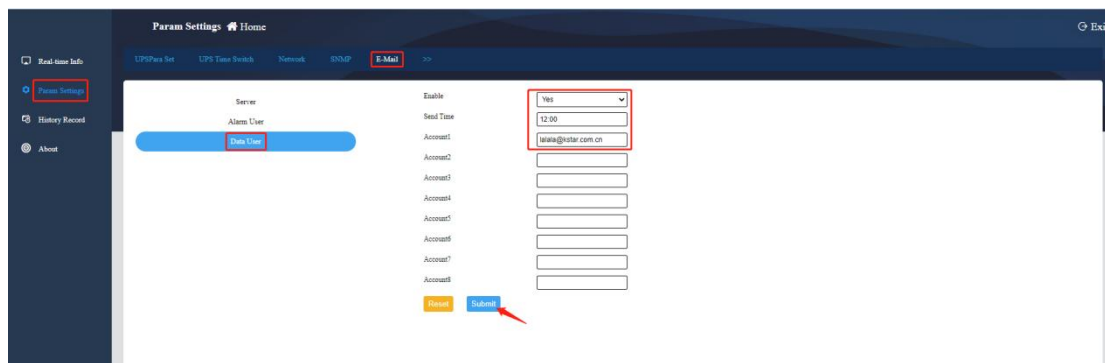
This item needs to fill in the e-mail account that will receive the alarm email and select “Yes” for Enable to activate the e-mail alarm function. After completing the settings, click [Submit] to

confirm, as shown below:



C. Data User Settings

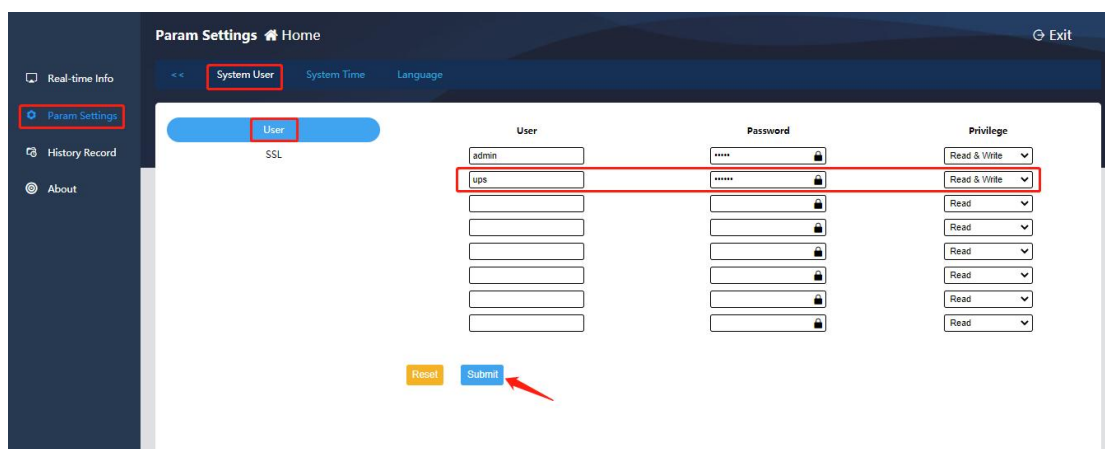
This item is to regularly receive the operating history data of the previous day (00:00 to 23:59) of the device. Enable this function by selecting “Yes”, selecting the sending time, and filling in the e-mail account that receives the data. After completing the settings, click [Submit] to confirm, as shown below:



4.2.6. System Users

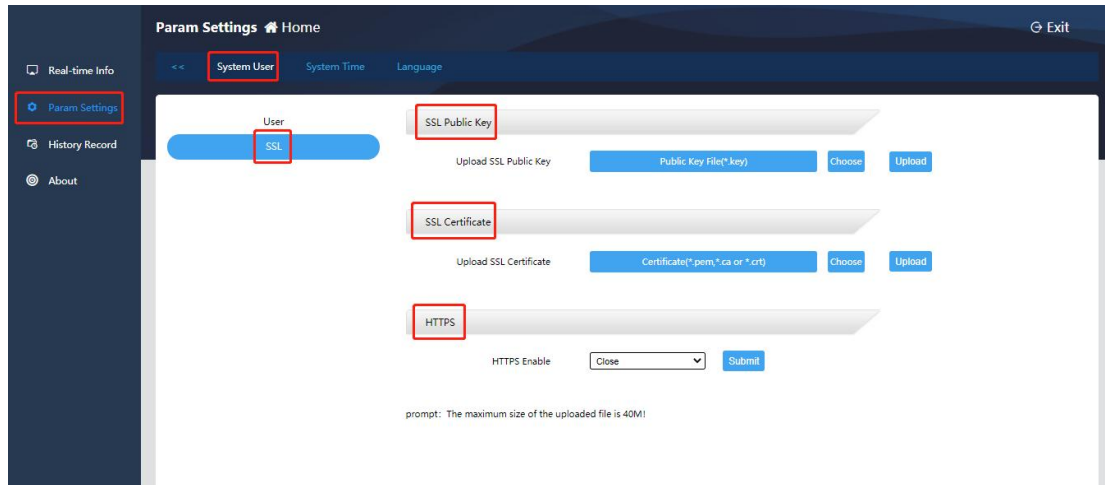
A. User Settings

This item allows adding users, filling in user name and password, and setting user permissions (read & write). After completing the settings, click [Submit] to confirm, as shown below:



B. SSL Settings

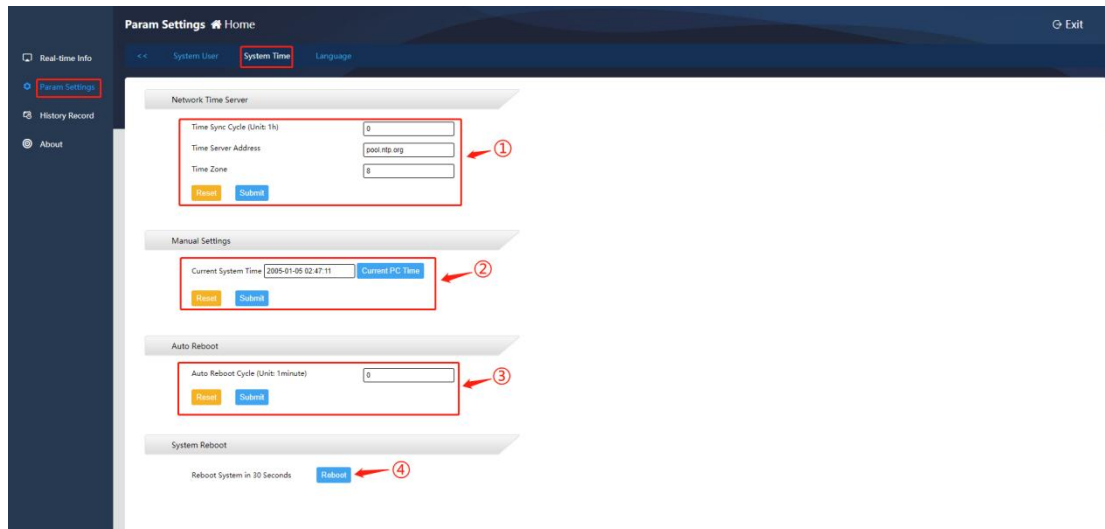
This setting enables HTTPS access mode, and SSL public key and SSL certificate need to be uploaded.



4.2.7. System Time

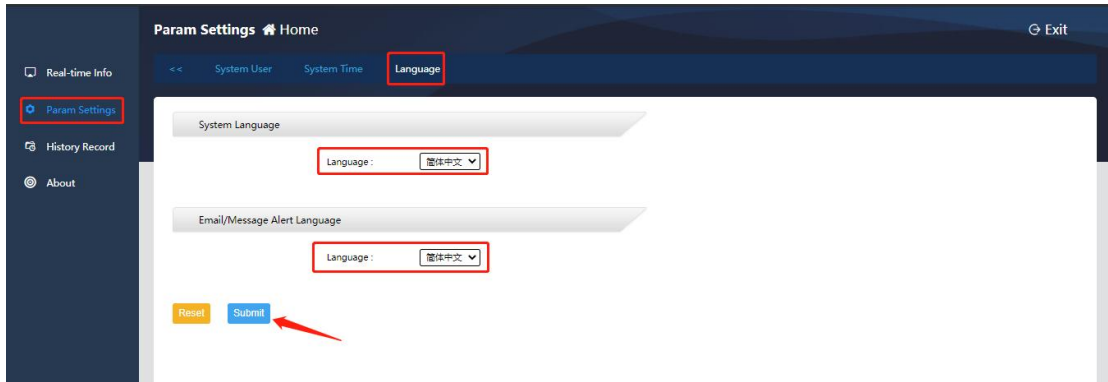
This item allows setting the system time and selecting the system restart method:

- ① Network time server settings: Fill in the time synchronization period, time server address, time zone, and click [Submit] to confirm;
- ② Manual setting: Click [Current PC Time], and then click [Submit] to manually synchronize the current computer time;
- ③ Automatic restart: Fill in the automatic restart period in minutes;
- ④ System restart: Click [Reboot] for 30 seconds to restart the device.



4.2.8. Language

This item allows setting the system language (Simplified Chinese/English) and the message language (Simplified Chinese/English). After completing the settings, click [Submit] to confirm, as shown below:

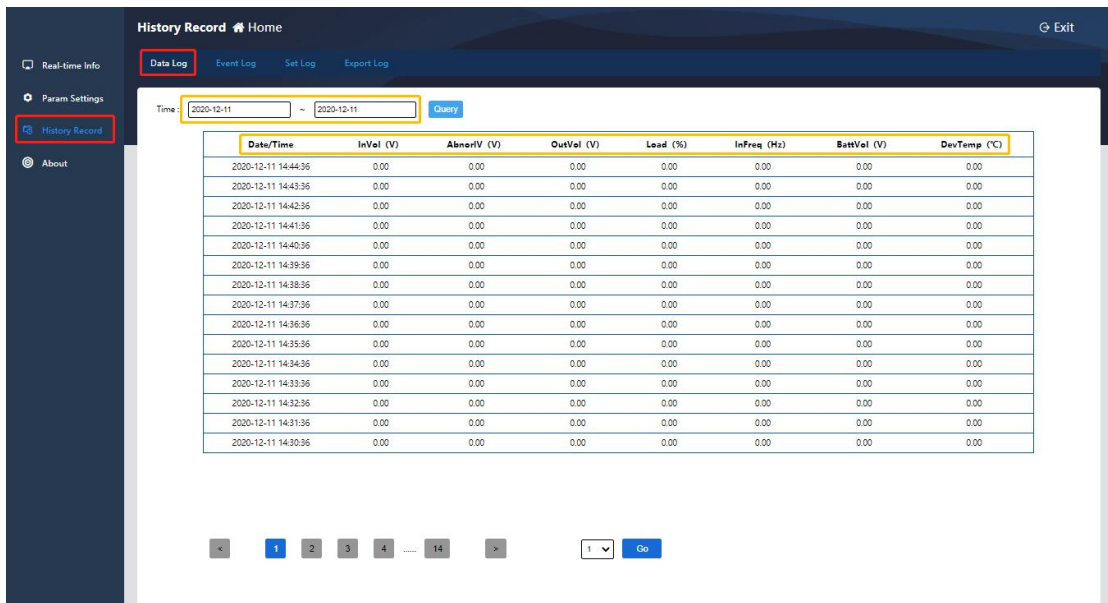


4.3. History

Historical record capacity: 60, 000 data logs (if the historical data recording interval is 1 minute, the historical data can be saved for 40 days), 5, 000 event logs and setting logs, and 10, 000 environmental logs.

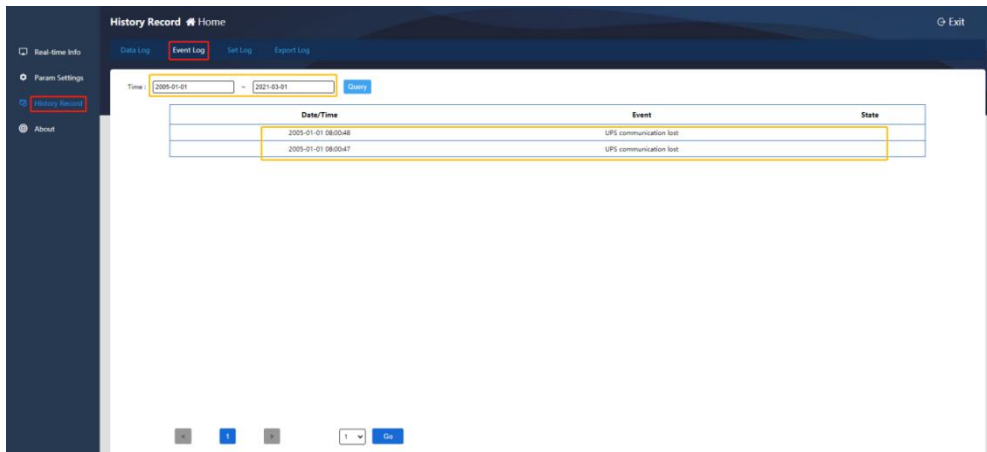
4.3.1. Data Log

By filtering the time period, you can query the equipment running data log.



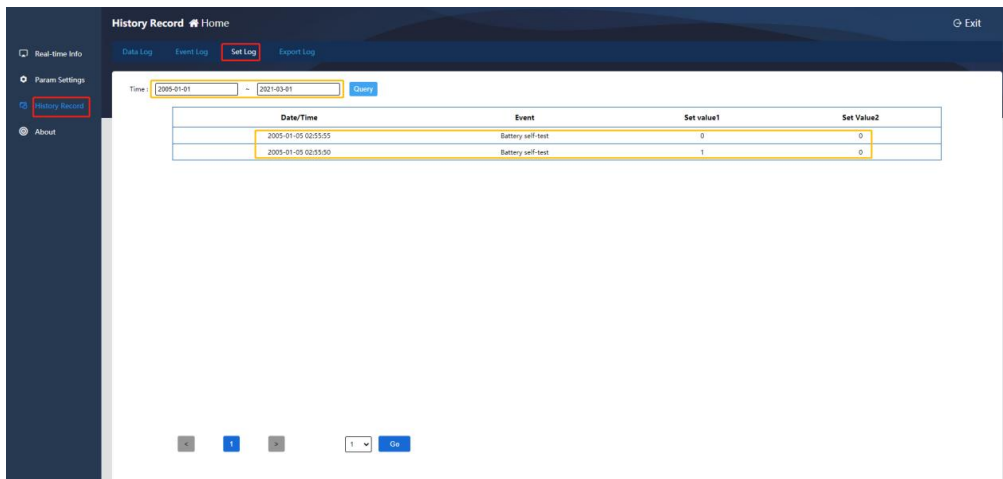
4.3.2. Event Log

By filtering the time period, you can query the equipment event log.



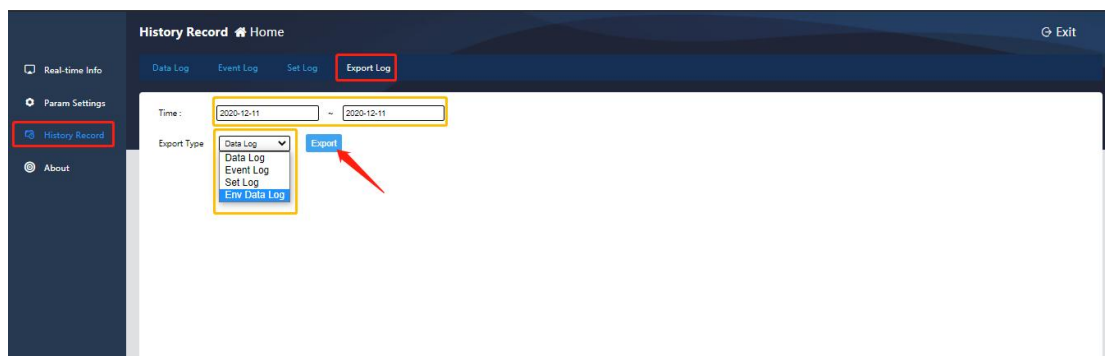
4.3.3. Set Log

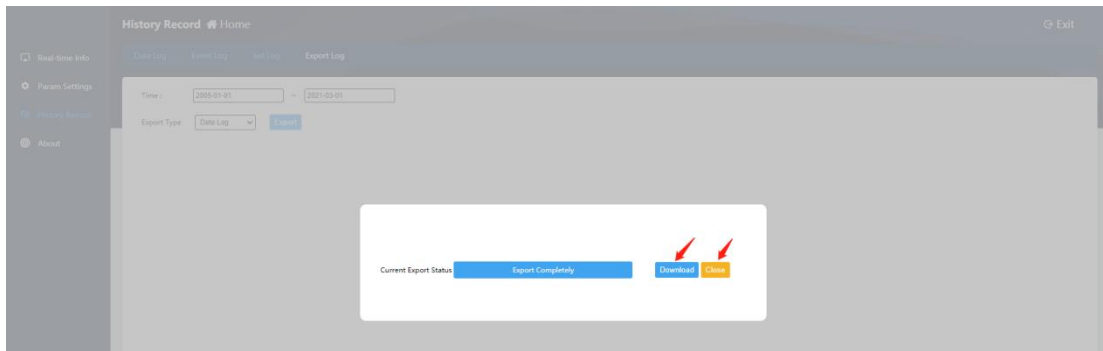
By filtering the time period, you can query the equipment setting log.



4.3.4. Export Log

By filtering the time period, select the log type to be exported, and click [Export] to download the log file in Excel format. After the download is successful, click [Close] to complete the log export.

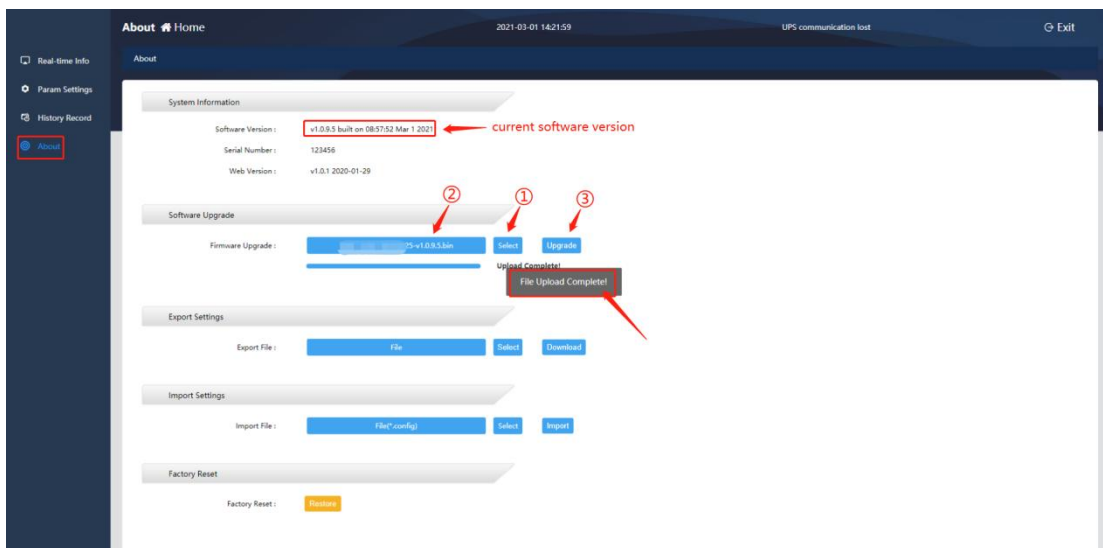




4.4. About

4.4.1. Web Page Upgrade

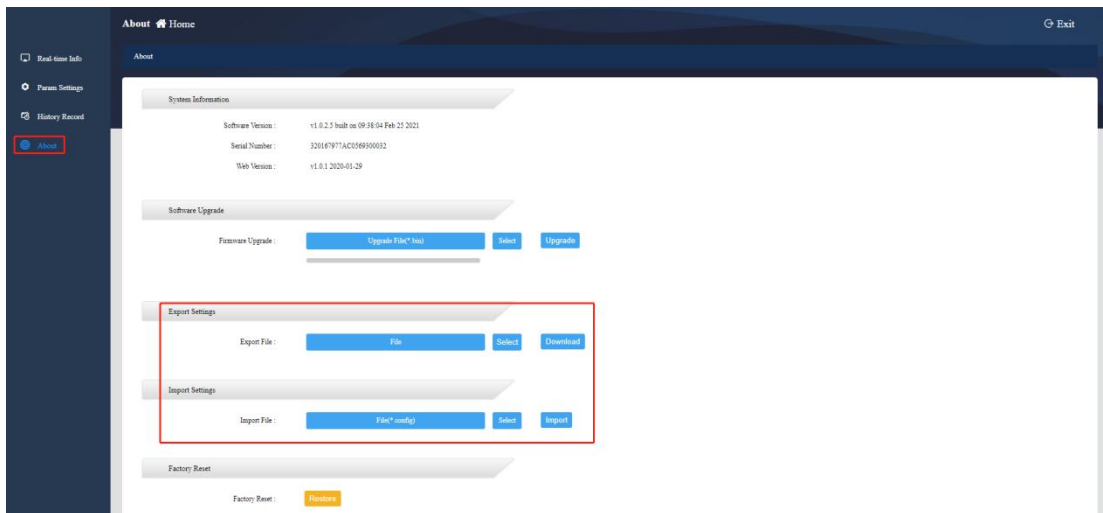
[System Information] allows viewing the current software version. When there is a version update, ① Click [Select]; ② Select the upgrade file named snmp-mini-2020xxxx-v1.0.x.bin; ③ Click [Upgrade]. It will prompt "File Upload Complete!".



4.4.2. Export/Import Settings

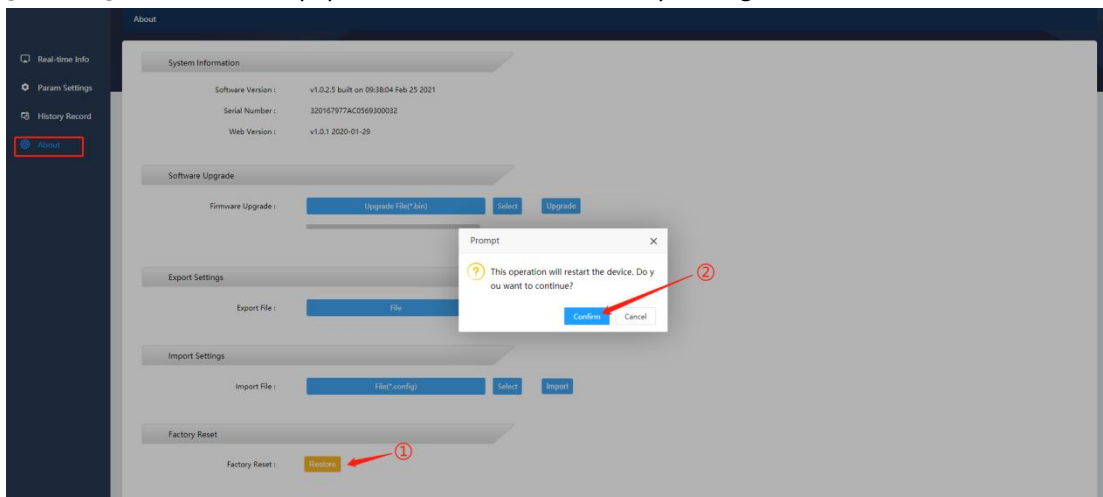
Export settings file: Export a file containing all the configuration information of the current equipment (suffix format .config);

Import settings file: Import a file containing equipment configuration information (suffix format .config);



4.4.3. Reset

About -- Factory Reset, ① click [Restore], ② when a confirmation box pops up, click [Confirm] to restart the equipment and restore the factory settings.



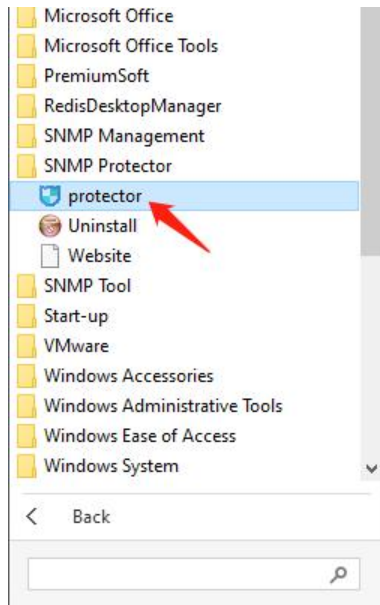
5. Shutdown Protection Software--SNMP_Protector

SNMP_Protector is a shutdown protection software used with UPS and SNMP card. After installing SNMP_Protector on Windows, it will shutdown the computer when “Main circuit abnormal、battery low、ups abnormal shutdown” occurs.

5.1. SNMP_Protector Installation

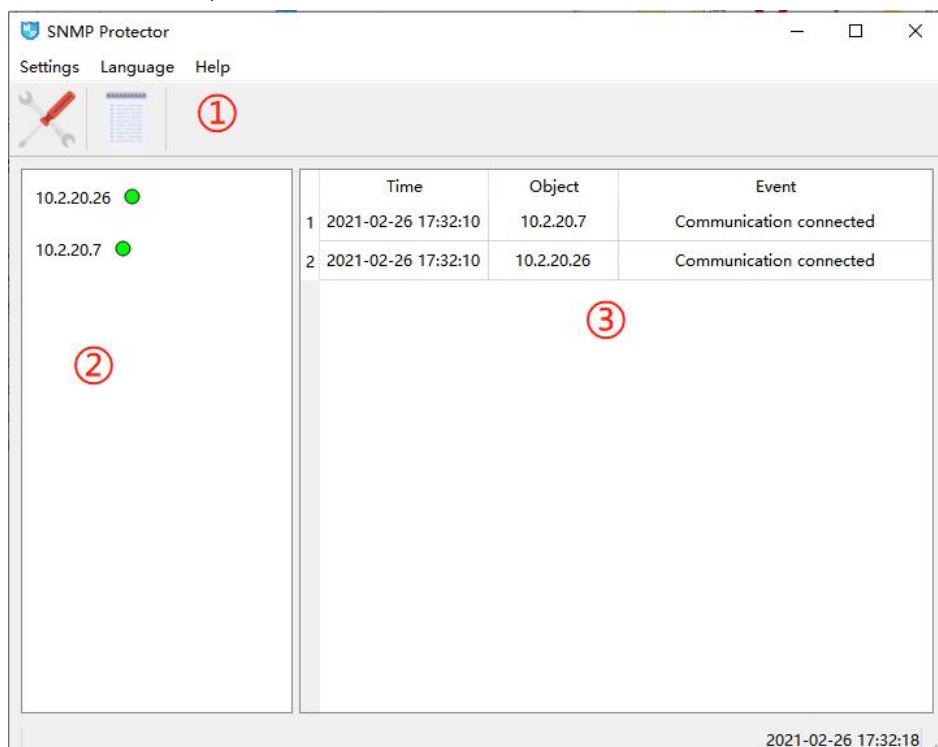
① Download the installation file from <http://download.ksdatacloud.com>, execute “SNMP_Protector_V1.xxxx.exe” to install the SNMP_Protector;

② After installation, users can find “SNMP_Protector” in Windows “Start”, click “protector” to start.



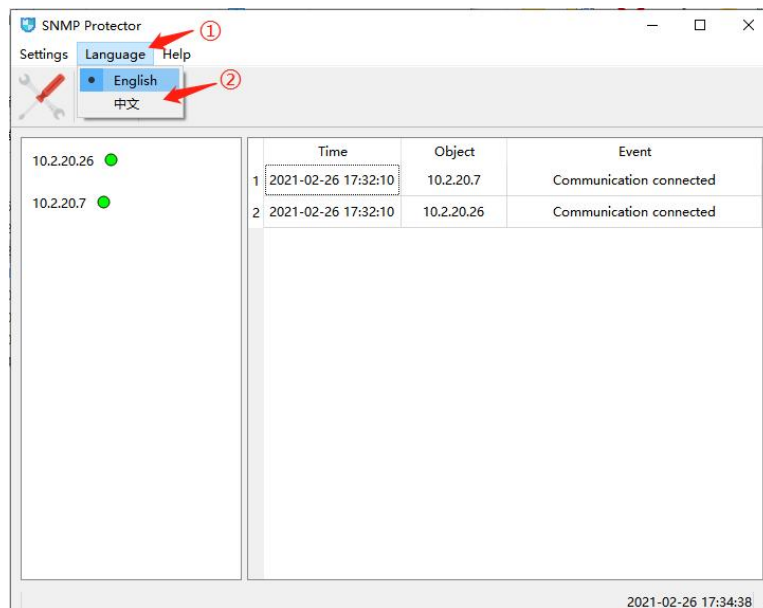
5.2. SNMP_Protector Usage

The software interface is mainly divided into three parts: ①Menu setting bar, ②Device list, ③Alarm information list; as shown below:



A. Language Setting

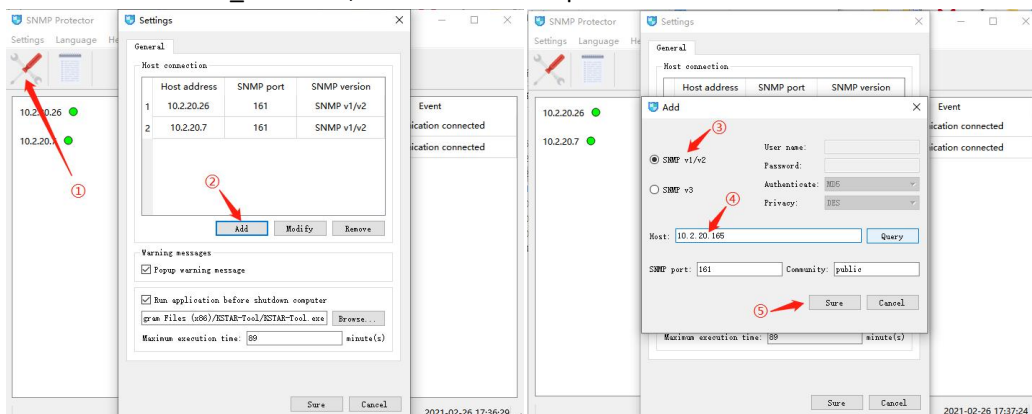
The default language is English, users can, ①Click [Language], ②Select the interface language type as English or Chinese.



B. Host Addition

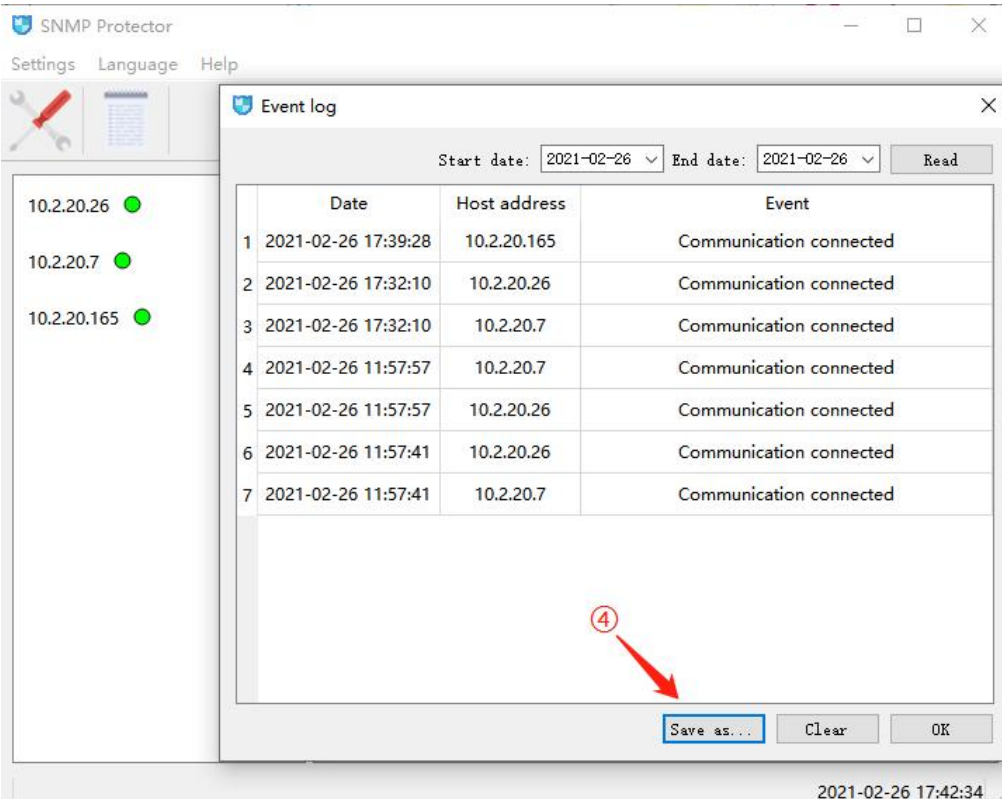
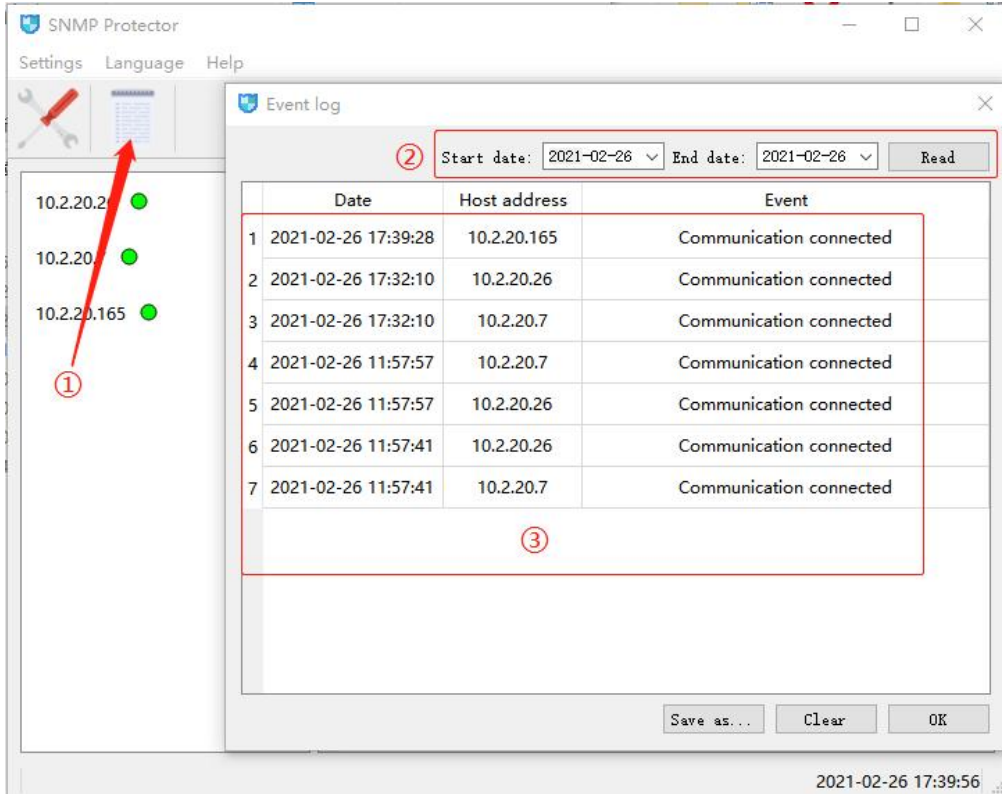
①Click Setting icon, ②Click [Add], ③Select SNMP v1/v2(default), ④Fill in the host(SNMP card)IP address, ⑤Click [Sure] to complete the device addition.

Note: Since the software provides shutdown protection by receiving Trap messages from SNMP cards, continue to run SNMP_Protector on the computer that needs shutdown protection. In addition, set the IP address of the computer to be shut down on the SNMP card page. The path is as follows: Parameter setting -- SNMP-trap, enter the IP address of the computer to be shut down, and set the version to SNMPv2 Trap. The community character is the same as the public character set on SNMP_Protector, and the default is public.



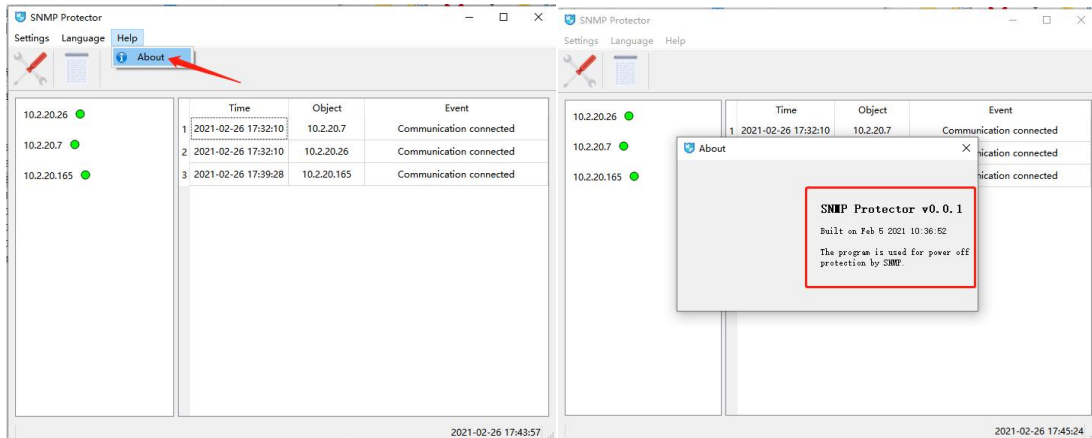
C. Log Query and Export

①Click Log icon, ②Select the query time, click [Read], ③Display the query results, ④Click [Save as] to Excel file.



D. Version Information

Click [Help]--[About], software version will be shown in the pop-up window.

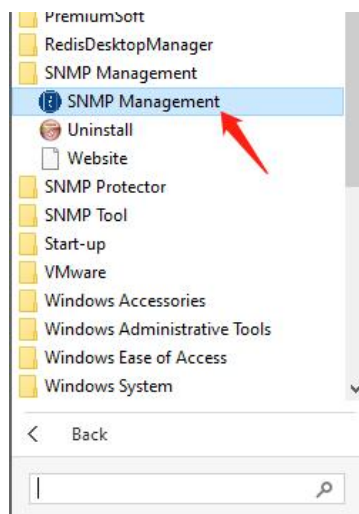


6. Centralized Monitoring Software--SNMP Management

SNMP Management is a software for batch unified management of SNMP devices. After adding SNMP devices, the software can record the running data and configuration of the UPS, and can perform remote control such as shutdown and self-checking of the UPS.

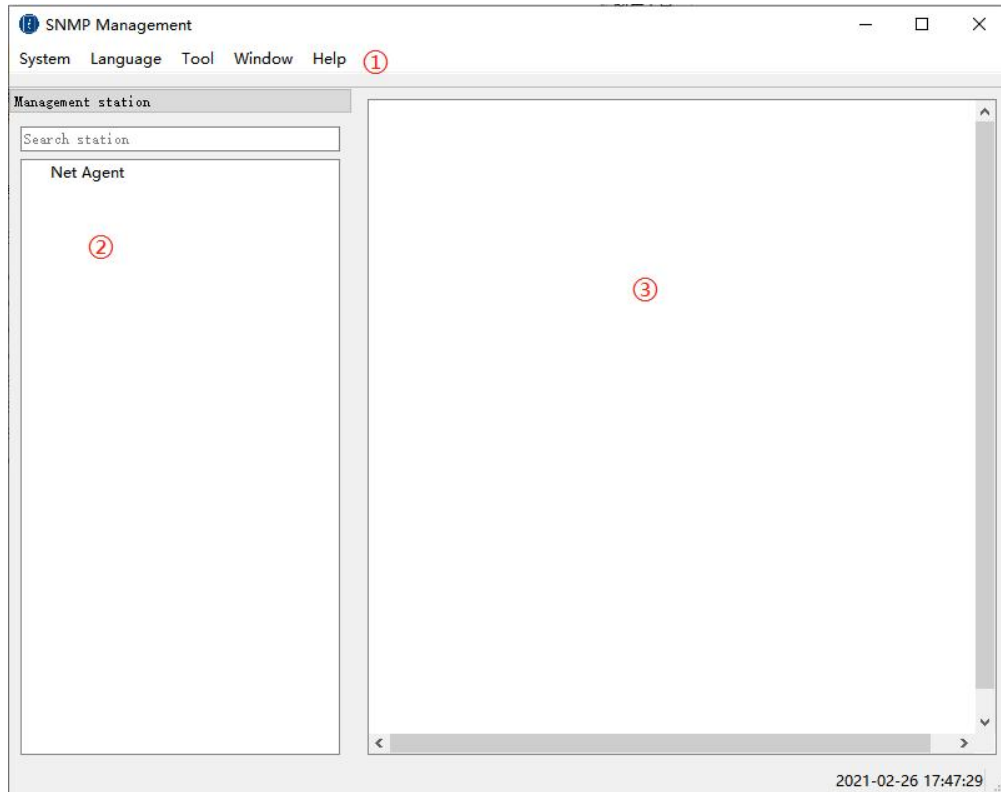
6.1. SNMP Management

- ① Download installation file from <http://download.ksdatacloud.com>, execute "SNMP_Management_20xxxxxx_V1.xxxxx.exe";
- ② After installation, users can find "SNMP_Management" in Windows "Start", click "SNMP Management" to start.



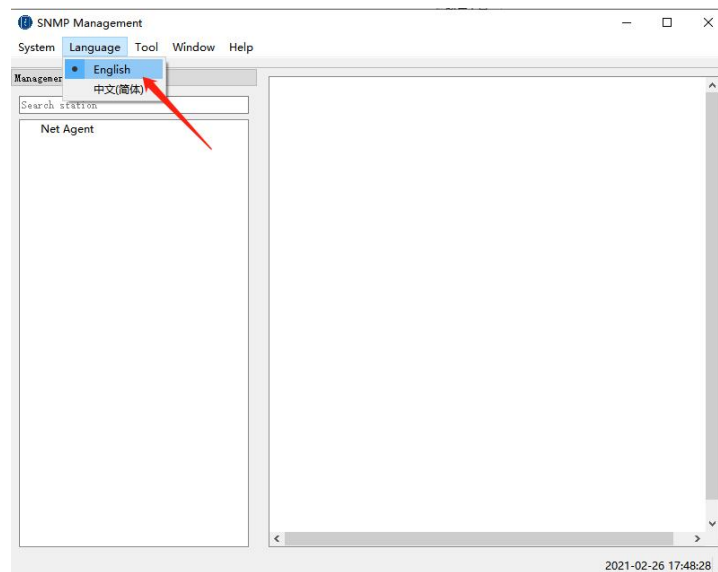
6.2. SNMP Management Usage

The software interface is mainly divided into three parts:①Menu bar, ②Management station ③Main data interface, as shown in the figure:



A. Language Setting

The default language of the software is English, and the user can choose from the menu bar, "Language", to select the language type displayed on the interface.

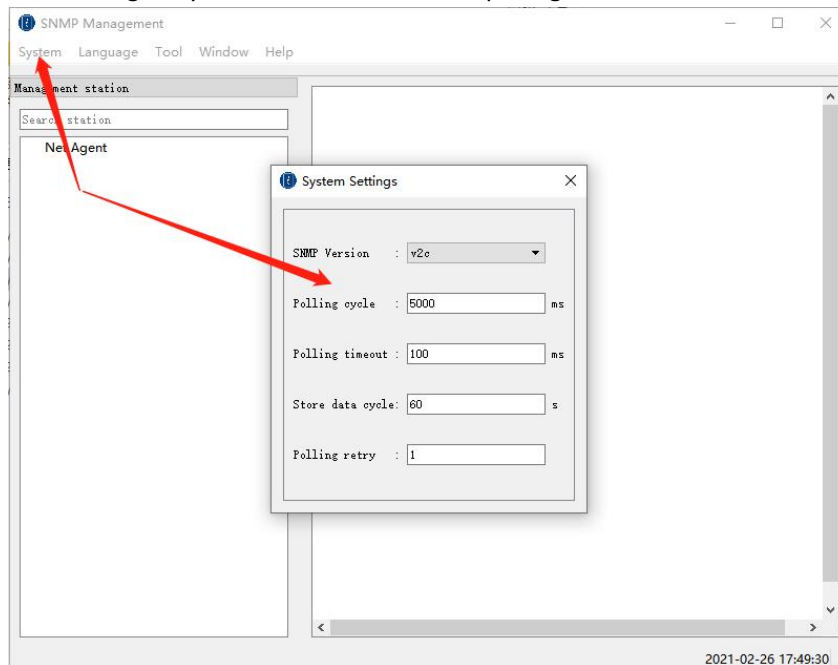


B. System Setting

System settings are used to set the communication parameters of the software and SNMP

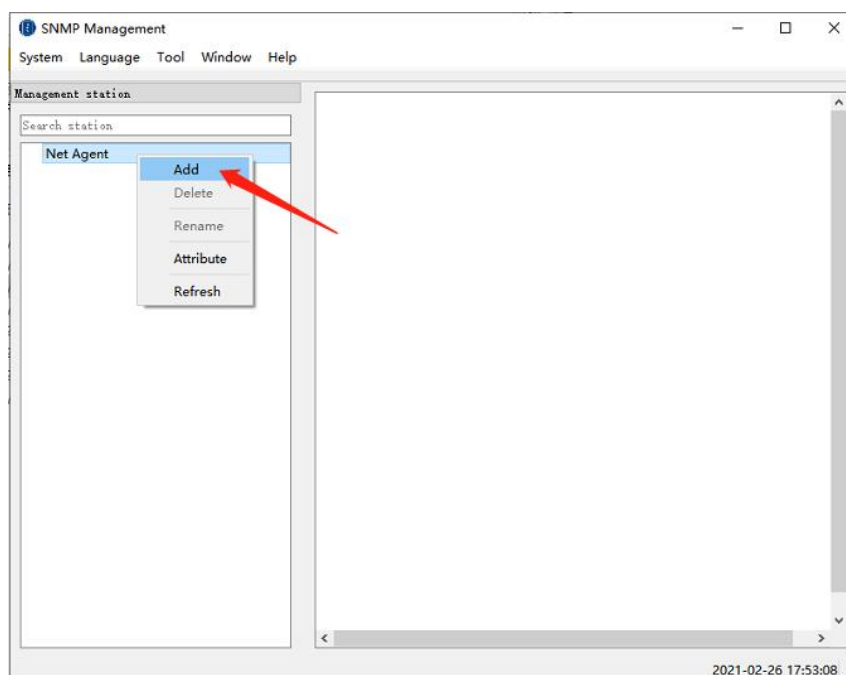
devices:

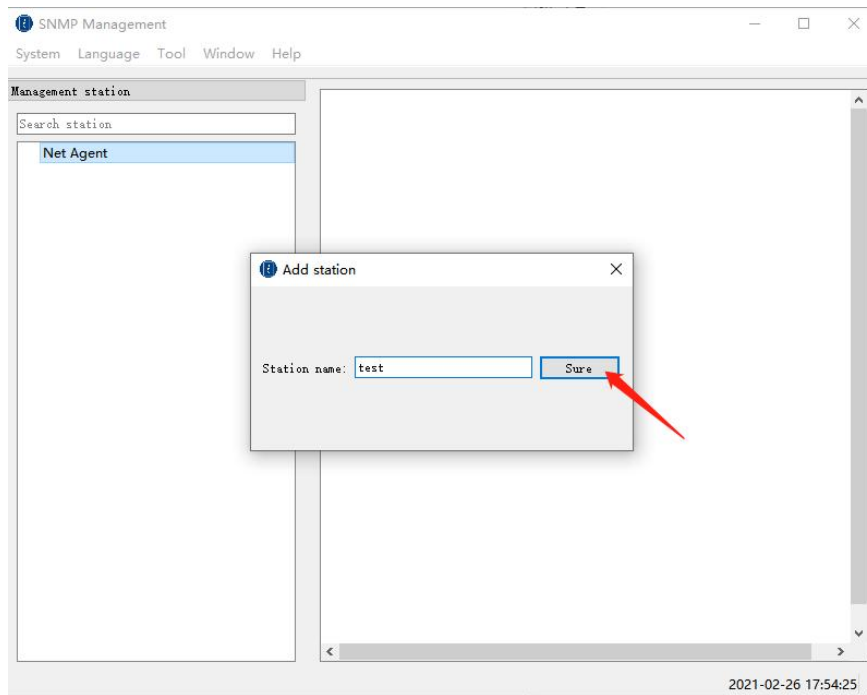
- SNMP Version: SNMP protocol version, this software supports SNMP v1 and SNMP v2c;
- Polling cycle: Cycle of software polling device data;
- Polling timeout: Timeout of polling single device;
- Store data cycle: Cycle of storing device data;
- Polling retry: Number of retries after polling failed.



C. Station Addition

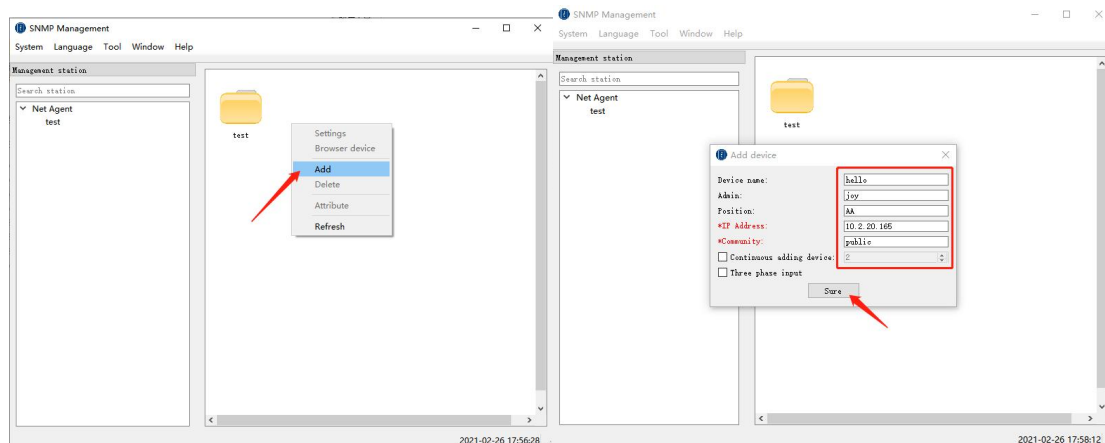
When using, firstly need to add the corresponding station in the Net Agent category: right-click the Net Agent item on the left side of the interface, select "Add", after completing the station name, click the "Sure" to complete the addition of the main station;





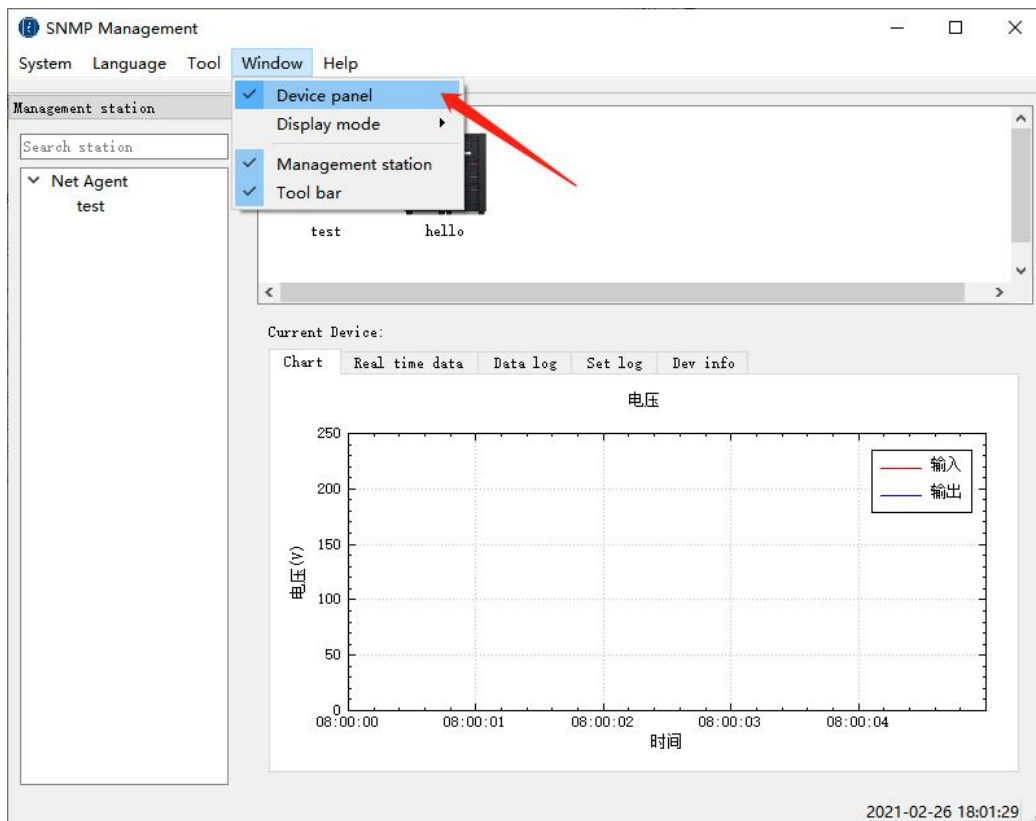
D. Device Addition

After completing the addition of the master station, you need to add the device under the corresponding station, click the name of the added station, right-click on the device data interface on the right, and then select "Add", the software will pop up the device addition interface, fill in. Then, click "Sure", the device will be added to the corresponding station, and the software can monitor the device in real time.

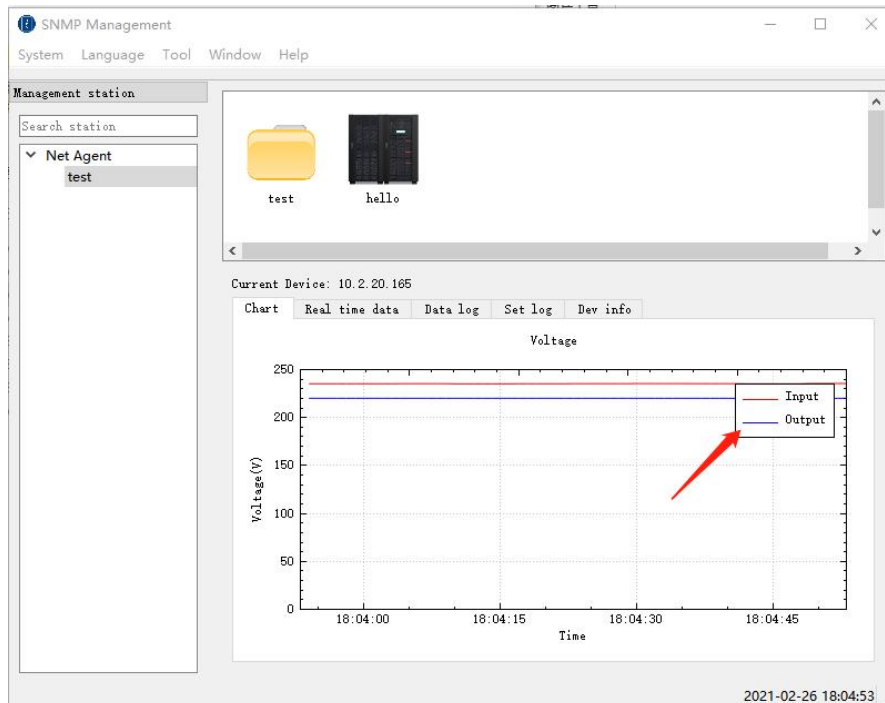


E. Device Panel

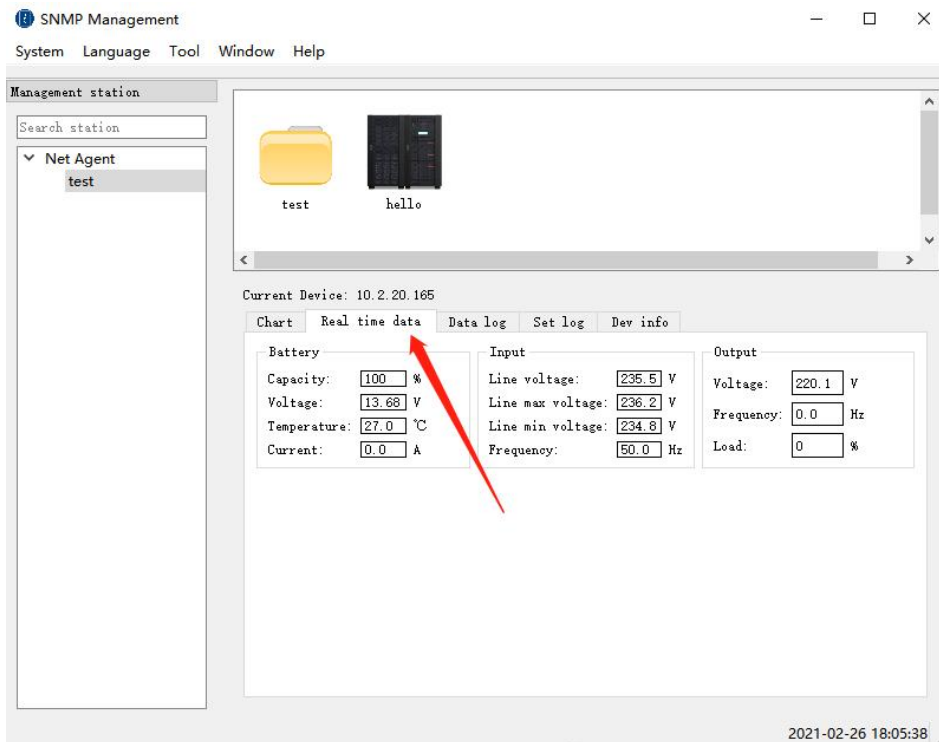
Click "Window--Device panel" to open the data panel, select the device to view the related data;



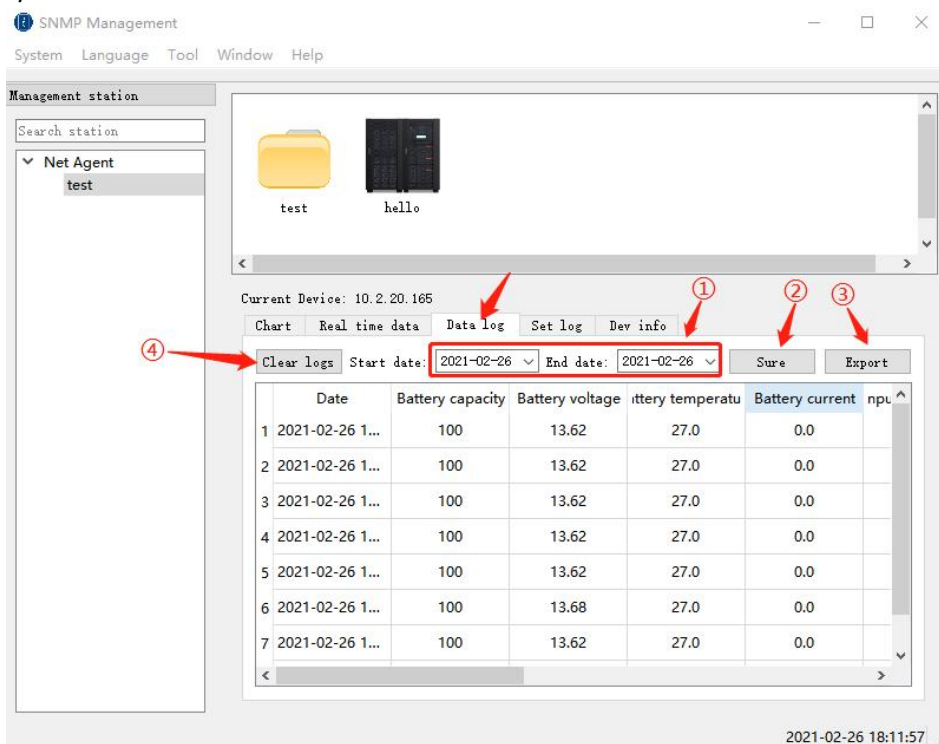
① Chart: Display the dynamic curve diagram of the input and output voltage of the device, and can visually observe the changes of input and output voltage in real time.



② Real time data: Display specific data of battery、input and output information of the device.



③ Data log: Users can choose to read the data records within the time range by themselves. First select the start date and end date of the data record to be queried, and then click the "Sure" button to query the data records within the selected date range. The software supports exporting data records to various types of Excel files. Click the "Export" button to export the currently read data records. Click the "Clear Logs" button to clear all data records of the currently selected device.



④ Set log: Record software settings record.

- ⑤ Dev info: Display current device information connected to SNMP card.
- Model: Device model connected to SNMP card;
 - Name: Device name connected to SNMP card;
 - UPS firmware version: UPS connected to SNMP card;
 - Date of manufacture: Device's date of manufacture;
 - Serial number: Device's manufacture serial number;
 - Agent firmware version: Agent version number of SNMP card.

F. Version Information

Click [Help]--[About], can view the software version information in the pop-up window, including software name, version number, build date of the program, copyright attribution and application introduction.

